

ANKLE FUSION SYSTEM

ANKLE FUSION SYSTEM



about us

Auxein Medical is an integrated, research based, orthopaedic Implants & instruments manufacturing company, producing a wide range of quality, affordable generic implants, trusted by healthcare professionals and patients across geographies. It is the Company's constant endeavor to provide a wide basket of generic and our innovator products that exceed the highest expectations of customers in term of quality and safety. The company has world-class manufacturing unit established in india and serves customers in over 75 countries worldwide.

Our Achievements



Orthopaedic Implants

4.5/5.0mm AV-WISELOCK™

Anterior Tibiotalar Fusion Plate

The 4.5/5.0mm AV-WiseLock Anterior Tibiotalar Fusion Plate is designed for use in Anterior Tibiotalar Arthrodesis. The distal portion of the plate is anatomically contoured and side-specific to provide the largest footprint and maximal number of fixation points in the talus of any fusion plate available. Holes in the distal end diverge slightly to provide improved pull-out resistance. The Combi hole obtains compression by eccentric screw placement within the hole after distal fixation on the plate has been achieved in the talus.

Strong low-profile plate decreases chance of soft tissue irritation and skin closure.

Allows lag compression through the center of the arthrodesis site for maximal compression.

Screw



- 5.5mm Low profile Cancellous Screw, Self-Tapping
- 4.5mm AV-Wiselock Low profile Cortical Screw, Self-Tapping
- 4.5mm Wise-Lock Cortical Screw, Self Tapping



Multiple points of talar fixation.

4.5/5.0mm AV-Wiselock Anterior Tibiotalar Fusion Plate



Holes	Direction	Titanium	Stainless Steel
2	Left	11-098-02LTI	11-098-02LSS
2	Right	11-098-02RTI	11-098-02RSS
3	Left	11-098-03LTI	11-098-03LSS
3	Right	11-098-03RTI	11-098-03RSS
4	Left	11-098-04LTI	11-098-04LSS
4	Right	11-098-04RTI	11-098-04RSS

STERILE

Holes	Direction	Titanium	Stainless Steel
2	Left	11-098-02LTI-S	11-098-02LSS-S
2	Right	11-098-02RTI-S	11-098-02RSS-S
3	Left	11-098-03LTI-S	11-098-03LSS-S
3	Right	11-098-03RTI-S	11-098-03RSS-S
4	Left	11-098-04LTI-S	11-098-04LSS-S
4	Right	11-098-04RTI-S	11-098-04RSS-S

4.5mm AV-Wiselock Low profile Cortical Screw, Self-Tapping


STERILE

Length	Titanium	Stainless Steel
12mm	11-103-012TI	11-103-012SS
14mm	11-103-014TI	11-103-014SS
16mm	11-103-016TI	11-103-016SS
18mm	11-103-018TI	11-103-018SS
20mm	11-103-020TI	11-103-020SS
22mm	11-103-022TI	11-103-022SS
24mm	11-103-024TI	11-103-024SS
26mm	11-103-026TI	11-103-026SS
28mm	11-103-028TI	11-103-028SS
30mm	11-103-030TI	11-103-030SS
32mm	11-103-032TI	11-103-032SS
34mm	11-103-034TI	11-103-034SS
36mm	11-103-036TI	11-103-036SS
38mm	11-103-038TI	11-103-038SS
40mm	11-103-040TI	11-103-040SS
42mm	11-103-042TI	11-103-042SS
44mm	11-103-044TI	11-103-044SS
46mm	11-103-046TI	11-103-046SS
48mm	11-103-048TI	11-103-048SS
50mm	11-103-050TI	11-103-050SS
52mm	11-103-052TI	11-103-052SS
54mm	11-103-054TI	11-103-054SS
56mm	11-103-056TI	11-103-056SS
58mm	11-103-058TI	11-103-058SS
60mm	11-103-060TI	11-103-060SS
65mm	11-103-065TI	11-103-065SS
70mm	11-103-070TI	11-103-070SS
75mm	11-103-075TI	11-103-075SS
80mm	11-103-080TI	11-103-080SS
85mm	11-103-085TI	11-103-085SS
90mm	11-103-090TI	11-103-090SS

Length	Titanium	Stainless Steel
12mm	11-103-012TI-S	11-103-012SS-S
14mm	11-103-014TI-S	11-103-014SS-S
16mm	11-103-016TI-S	11-103-016SS-S
18mm	11-103-018TI-S	11-103-018SS-S
20mm	11-103-020TI-S	11-103-020SS-S
22mm	11-103-022TI-S	11-103-022SS-S
24mm	11-103-024TI-S	11-103-024SS-S
26mm	11-103-026TI-S	11-103-026SS-S
28mm	11-103-028TI-S	11-103-028SS-S
30mm	11-103-030TI-S	11-103-030SS-S
32mm	11-103-032TI-S	11-103-032SS-S
34mm	11-103-034TI-S	11-103-034SS-S
36mm	11-103-036TI-S	11-103-036SS-S
38mm	11-103-038TI-S	11-103-038SS-S
40mm	11-103-040TI-S	11-103-040SS-S
42mm	11-103-042TI-S	11-103-042SS-S
44mm	11-103-044TI-S	11-103-044SS-S
46mm	11-103-046TI-S	11-103-046SS-S
48mm	11-103-048TI-S	11-103-048SS-S
50mm	11-103-050TI-S	11-103-050SS-S
52mm	11-103-052TI-S	11-103-052SS-S
54mm	11-103-054TI-S	11-103-054SS-S
56mm	11-103-056TI-S	11-103-056SS-S
58mm	11-103-058TI-S	11-103-058SS-S
60mm	11-103-060TI-S	11-103-060SS-S
65mm	11-103-065TI-S	11-103-065SS-S
70mm	11-103-070TI-S	11-103-070SS-S
75mm	11-103-075TI-S	11-103-075SS-S
80mm	11-103-080TI-S	11-103-080SS-S
85mm	11-103-085TI-S	11-103-085SS-S
90mm	11-103-090TI-S	11-103-090SS-S

5.5mm Low profile Cancellous Screw, Self-Tapping

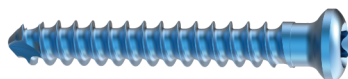


Length	Titanium	Stainless Steel
20mm	13-039-020TI	13-039-020SS
22mm	13-039-022TI	13-039-022SS
24mm	13-039-024TI	13-039-024SS
26mm	13-039-026TI	13-039-026SS
28mm	13-039-028TI	13-039-028SS
30mm	13-039-030TI	13-039-030SS
32mm	13-039-032TI	13-039-032SS
34mm	13-039-034TI	13-039-034SS
36mm	13-039-036TI	13-039-036SS
38mm	13-039-038TI	13-039-038SS
40mm	13-039-040TI	13-039-040SS
42mm	13-039-042TI	13-039-042SS
44mm	13-039-044TI	13-039-044SS
46mm	13-039-046TI	13-039-046SS
48mm	13-039-048TI	13-039-048SS
50mm	13-039-050TI	13-039-050SS
55mm	13-039-055TI	13-039-055SS
60mm	13-039-060TI	13-039-060SS
65mm	13-039-065TI	13-039-065SS
70mm	13-039-070TI	13-039-070SS
75mm	13-039-075TI	13-039-075SS
80mm	13-039-080TI	13-039-080SS
85mm	13-039-085TI	13-039-085SS
90mm	13-039-090TI	13-039-090SS
95mm	13-039-095TI	13-039-095SS
100mm	13-039-100TI	13-039-100SS
105mm	13-039-105TI	13-039-105SS
110mm	13-039-110TI	13-039-110SS
115mm	13-039-115TI	13-039-115SS
120mm	13-039-120TI	13-039-120SS

STERILE

Length	Titanium	Stainless Steel
20mm	13-039-020TI-S	13-039-020SS-S
22mm	13-039-022TI-S	13-039-022SS-S
24mm	13-039-024TI-S	13-039-024SS-S
26mm	13-039-026TI-S	13-039-026SS-S
28mm	13-039-028TI-S	13-039-028SS-S
30mm	13-039-030TI-S	13-039-030SS-S
32mm	13-039-032TI-S	13-039-032SS-S
34mm	13-039-034TI-S	13-039-034SS-S
36mm	13-039-036TI-S	13-039-036SS-S
38mm	13-039-038TI-S	13-039-038SS-S
40mm	13-039-040TI-S	13-039-040SS-S
42mm	13-039-042TI-S	13-039-042SS-S
44mm	13-039-044TI-S	13-039-044SS-S
46mm	13-039-046TI-S	13-039-046SS-S
48mm	13-039-048TI-S	13-039-048SS-S
50mm	13-039-050TI-S	13-039-050SS-S
55mm	13-039-055TI-S	13-039-055SS-S
60mm	13-039-060TI-S	13-039-060SS-S
65mm	13-039-065TI-S	13-039-065SS-S
70mm	13-039-070TI-S	13-039-070SS-S
75mm	13-039-075TI-S	13-039-075SS-S
80mm	13-039-080TI-S	13-039-080SS-S
85mm	13-039-085TI-S	13-039-085SS-S
90mm	13-039-090TI-S	13-039-090SS-S
95mm	13-039-095TI-S	13-039-095SS-S
100mm	13-039-100TI-S	13-039-100SS-S
105mm	13-039-105TI-S	13-039-105SS-S
110mm	13-039-110TI-S	13-039-110SS-S
115mm	13-039-115TI-S	13-039-115SS-S
120mm	13-039-120TI-S	13-039-120SS-S

4.5mm Wise-Lock Cortical Screw, Self-Tapping, (Star Head)


STERILE

Length	Titanium	Stainless Steel
12mm	11-104-012TI	11-104-012SS
14mm	11-104-014TI	11-104-014SS
16mm	11-104-016TI	11-104-016SS
18mm	11-104-018TI	11-104-018SS
20mm	11-104-020TI	11-104-020SS
22mm	11-104-022TI	11-104-022SS
24mm	11-104-024TI	11-104-024SS
26mm	11-104-026TI	11-104-026SS
28mm	11-104-028TI	11-104-028SS
30mm	11-104-030TI	11-104-030SS
32mm	11-104-032TI	11-104-032SS
34mm	11-104-034TI	11-104-034SS
36mm	11-104-036TI	11-104-036SS
38mm	11-104-038TI	11-104-038SS
40mm	11-104-040TI	11-104-040SS
42mm	11-104-042TI	11-104-042SS
44mm	11-104-044TI	11-104-044SS
46mm	11-104-046TI	11-104-046SS
48mm	11-104-048TI	11-104-048SS
50mm	11-104-050TI	11-104-050SS
52mm	11-104-052TI	11-104-052SS
54mm	11-104-054TI	11-104-054SS
56mm	11-104-056TI	11-104-056SS
58mm	11-104-058TI	11-104-058SS
60mm	11-104-060TI	11-104-060SS
65mm	11-104-065TI	11-104-065SS
70mm	11-104-070TI	11-104-070SS
75mm	11-104-075TI	11-104-075SS
80mm	11-104-080TI	11-104-080SS
85mm	11-104-085TI	11-104-085SS
90mm	11-104-090TI	11-104-090SS

Length	Titanium	Stainless Steel
12mm	11-104-012TI-S	11-104-012SS-S
14mm	11-104-014TI-S	11-104-014SS-S
16mm	11-104-016TI-S	11-104-016SS-S
18mm	11-104-018TI-S	11-104-018SS-S
20mm	11-104-020TI-S	11-104-020SS-S
22mm	11-104-022TI-S	11-104-022SS-S
24mm	11-104-024TI-S	11-104-024SS-S
26mm	11-104-026TI-S	11-104-026SS-S
28mm	11-104-028TI-S	11-104-028SS-S
30mm	11-104-030TI-S	11-104-030SS-S
32mm	11-104-032TI-S	11-104-032SS-S
34mm	11-104-034TI-S	11-104-034SS-S
36mm	11-104-036TI-S	11-104-036SS-S
38mm	11-104-038TI-S	11-104-038SS-S
40mm	11-104-040TI-S	11-104-040SS-S
42mm	11-104-042TI-S	11-104-042SS-S
44mm	11-104-044TI-S	11-104-044SS-S
46mm	11-104-046TI-S	11-104-046SS-S
48mm	11-104-048TI-S	11-104-048SS-S
50mm	11-104-050TI-S	11-104-050SS-S
52mm	11-104-052TI-S	11-104-052SS-S
54mm	11-104-054TI-S	11-104-054SS-S
56mm	11-104-056TI-S	11-104-056SS-S
58mm	11-104-058TI-S	11-104-058SS-S
60mm	11-104-060TI-S	11-104-060SS-S
65mm	11-104-065TI-S	11-104-065SS-S
70mm	11-104-070TI-S	11-104-070SS-S
75mm	11-104-075TI-S	11-104-075SS-S
80mm	11-104-080TI-S	11-104-080SS-S
85mm	11-104-085TI-S	11-104-085SS-S
90mm	11-104-090TI-S	11-104-090SS-S

2100-3.2-145

Drill Bit with Quick Coupling End, Ø3.2mm x Length 145mm, (for Large Fragment)



2100-4.5-145

Drill Bit with Quick Coupling End, Ø4.5mm x Length 145mm, (for Large Fragment)



2103-07

Bone Tap Quick Coupling for Ø4.5mm Cortical Screws, (for Large Fragment)



2103-09

Bone Tap Quick Coupling for Ø6.5mm Cancellous Screws, (for Large Fragment)



2103-4.3-225

Drill Bit Quick Coupling with Stopper Ø4.3mm x Length 225mm, (for Large Fragment)



2106-2.0

Guide Sleeve for Ø2.0mm K. Wires (for Large Fragment)



3400-02

T-Handle Countersink for Ø4.5/6.5mm Screws, (for Large Fragment)


3420-02

Insert Drill Sleeve, Ø4.5/3.2mm, (for Large Fragment)


3443-38-5.0

Extraction Screw, Ø5.0mm, (for Large Fragment)


3408-04

Hexagonal Screwdriver Shaft - 3.5mm Tip, Quick Coupling, Short (for Large Fragment)


2186-3.5

HSS Drill Bit, Ø3.5mm, (for Large Fragment)


1472-058

Self-Centering Double Drill Guide, Ø4.5/3.2mm, (for Large Fragment)



3767-6.5

Double Drill Guide, Ø6.5/3.2mm, (for Large Fragment)


BT-LF-S

Bending Template, Small, (for Large Fragment)


BT-LF-M

Bending Template, Medium, (for Large Fragment)


BT-LF-L

Bending Template, Large, (for Large Fragment)


1472-062

Threaded Drill Sleeve for Drill Bit Ø4.3mm - (for Large Fragment)


GW-2.0-230

Guide Wire with Threaded Tip, Ø2.0mm x Thread Length 10mm x Length 230mm



3766-003

Allen Key, Hex 3.0mm (for Large Fragment)


1472-052

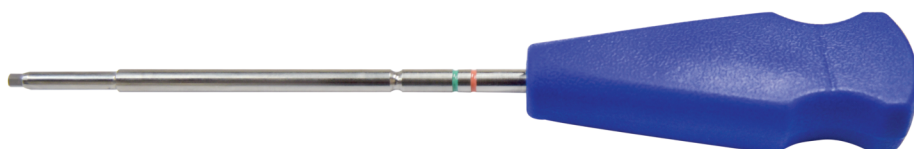
Pulling Drill Bit, Ø4.0mm (for Large Fragment)


3443-400

Depth Gauge measuring upto 110mm (for Large Fragment)


3406-04

Screwdriver, Hex 3.5mm, (for Large Fragment)


3406-04S

Holding Sleeve for Screwdriver, Hex 3.5mm, for Locking Screw


3445-3.5

T-Handle Screwdriver, Hex 3.5mm, Self-Retaining (for Large Fragment)



1472-056

Screwdriver Holding Sleeve for Cortical and Cancellous Screws (for Large Fragment)


3408-04L

Hexagonal Screwdriver Shaft with Quick Coupling - 3.5mm Tip, Long


7-051-04

Trephine (for Large Fragment)


3402-000

T-Handle with Quick Coupling (for Large Fragment)


1472-054

Quick Coupling Shaft (for Large Fragment)


TQ-3.5

Torque Limiting Attachment, 4.0Nm, (for Large Fragment)



1472-064 Torque Screwdriver Handle (for Large Fragment)



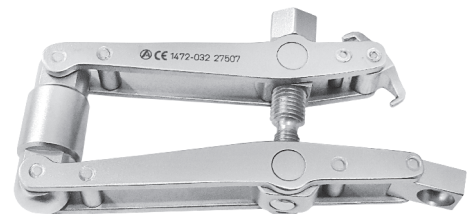
3409-01L Bending Iron, Left, (for Large Fragment)



3409-01R Bending Iron, Right, (for Large Fragment)



1472-032 Articulated Tension Device (for Large Fragment)



1472-034 Articulated Tension Device Key (for Large Fragment)



2150-1008 Periosteal Elevator, Round, 8mm, (for Large Fragment)



2150-1016 Periosteal Elevator, Flat, 16mm, (for Large Fragment)



2107-1240 Reduction Forcep, Pointed, Ratchet Lock, 240mm, (for Large Fragment)



2106-1240 Reduction Forcep, Serrated, Speed Lock, 240mm, (for Large Fragment)



2105-000 Self-Centering Bone Holding Forcep, Speed Lock, (for Large Fragment)



1472-070 Hohmann Retractor, 44mm, (for Large Fragment)



2146-016 Hohmann Retractor, 16mm, (for Large Fragment)



7-051-03

Screw Holding Forcep (for Large Fragment)


7-157-01

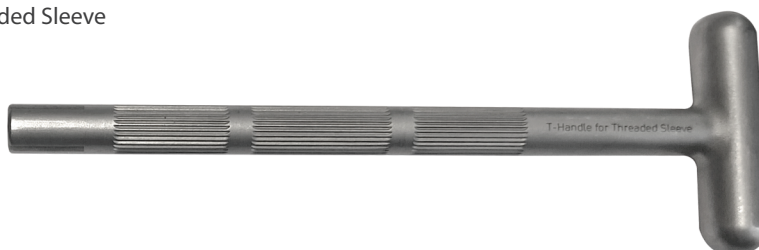
Star Screwdriver Shaft, T25 for AV-Wiselock Large Fragment


3412-030

Drill Guide For Neutral and Loaded Position, DCP Ø4.5/3.2mm


7-050-05

T-Handle for Threaded Sleeve


7-157-02

Star Screwdriver, T25 for AV-Wiselock Large Fragment


7-157-03

4.3mm Variable Angle Double Drill Guide



7-157-04

Threaded Drill Sleeve, Ø4.3/5.0mm for AV-Wiselock Large Fragment



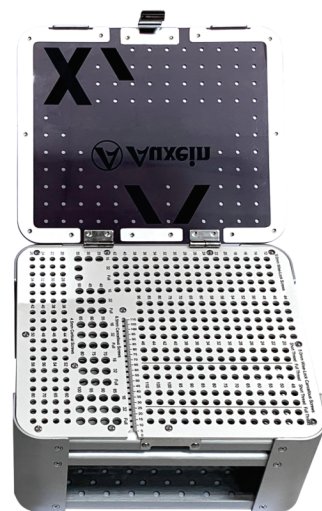
7-157-05

6.0Nm Torque Limiting Handle for AV-Wiselock Large Fragment



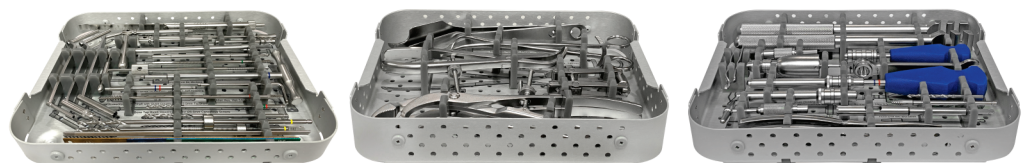
7-157-06

Screw Caddy for AV-Wiselock Large Fragment System



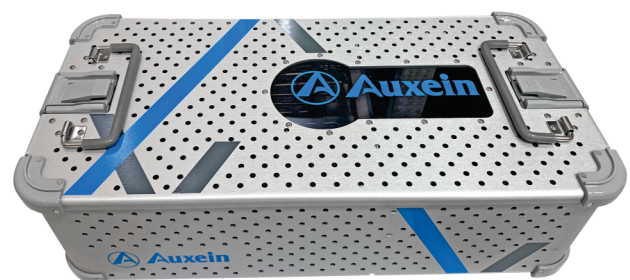
7-152-07

Instrument Trays for AV- Wise-Lock Large Fragment Instrument Set

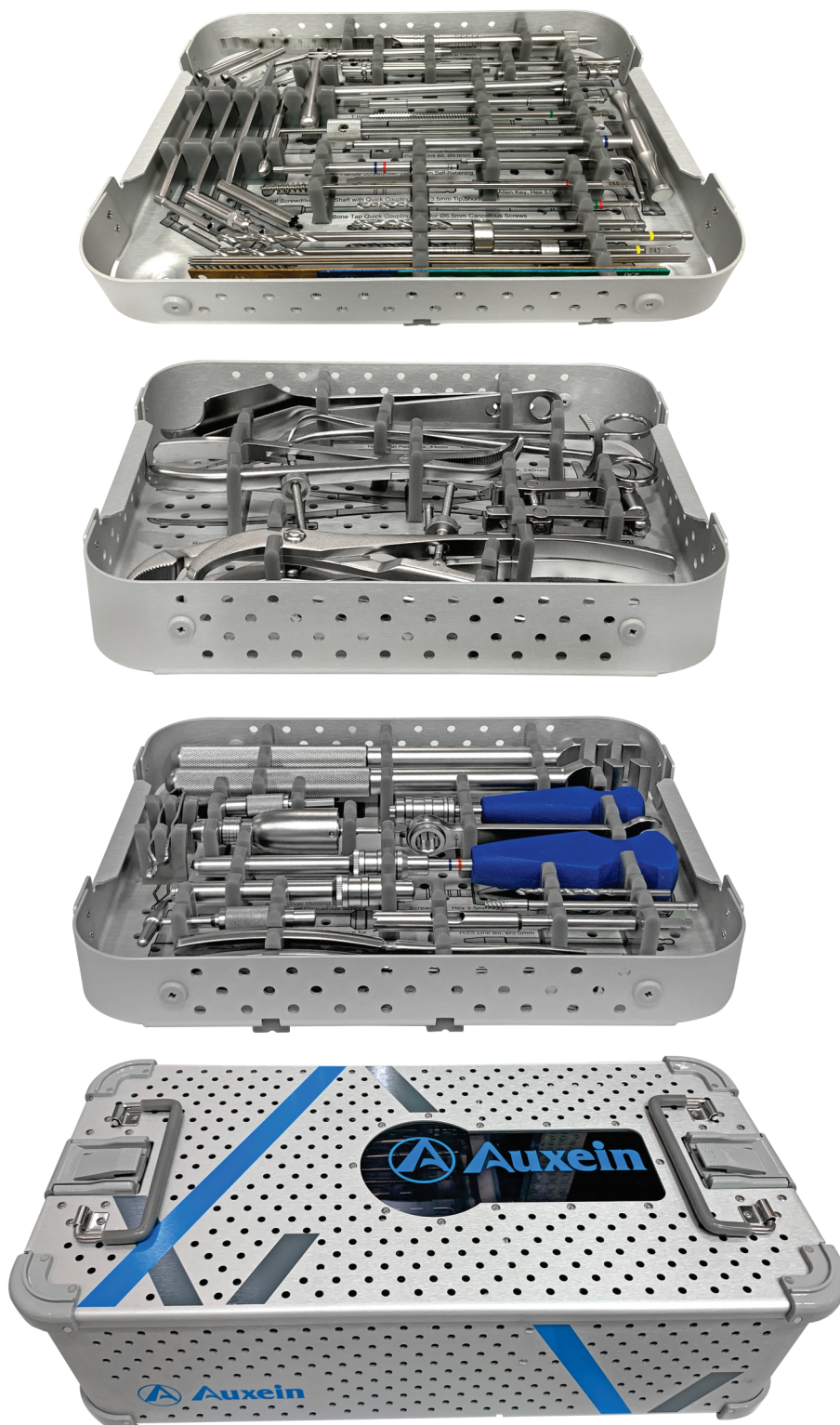


7-152-08

Container for AV- Wise-Lock Large Fragment Instrument Set



7-157 AV-Wiselock Large Fragment Instruments Set



7-157 AV-Wiselock Large Fragment Instruments Set

Codes	Set Consisting of:	Units
2100-3.2-145	Drill Bit with Quick Coupling End, Ø3.2mm x Length 145mm, (for Large Fragment)	1
2100-4.5-145	Drill Bit with Quick Coupling End, Ø4.5mm x Length 145mm, (for Large Fragment)	1
2103-07	Bone Tap Quick Coupling for Ø4.5mm Cortical Screws, (for Large Fragment)	1
2103-09	Bone Tap Quick Coupling for Ø6.5mm Cancellous Screws, (for Large Fragment)	1
2103-4.3-225	Drill Bit Quick Coupling with Stopper Ø4.3mm x Length 225mm, (for Large Fragment)	2
2106-2.0	Guide Sleeve for Ø2.0mm K. Wires (for Large Fragment)	1
3400-02	T-Handle Countersink for Ø4.5/6.5mm Screws, (for Large Fragment)	1
3420-02	Insert Drill Sleeve, Ø4.5/3.2mm, (for Large Fragment)	1
3443-38-5.0	Extraction Screw, Ø5.0mm, (for Large Fragment)	1
3408-04	Hexagonal Screwdriver Shaft - 3.5mm Tip, Quick Coupling, Short (for Large Fragment)	1
2186-3.5	HSS Drill Bit, Ø3.5mm, (for Large Fragment)	1
1472-058	Self-Centering Double Drill Guide, Ø4.5/3.2mm, (for Large Fragment)	1
3767-6.5	Double Drill Guide, Ø6.5/3.2mm, (for Large Fragment)	1
BT-LF-S	Bending Template, Small, (for Large Fragment)	1
BT-LF-M	Bending Template, Medium, (for Large Fragment)	1
BT-LF-L	Bending Template, Large, (for Large Fragment)	1
1472-062	Threaded Drill Sleeve for Drill Bit Ø4.3mm - (for Large Fragment)	3
GW-2.0-230	Guide Wire with Threaded Tip, Ø2.0mm x Thread Length 10mm x Length 230mm	3
3766-003	Allen Key, Hex 3.0mm (for Large Fragment)	1
1472-052	Pulling Drill Bit, Ø4.0mm (for Large Fragment)	1
3443-400	Depth Gauge measuring upto 110mm (for Large Fragment)	1
3406-04	Screwdriver, Hex 3.5mm, (for Large Fragment)	1
3406-04S	Holding Sleeve for Screwdriver, Hex 3.5mm, for Locking Screw	1
3445-3.5	T-Handle Screwdriver, Hex 3.5mm, Self-Retaining (for Large Fragment)	1
1472-056	Screwdriver Holding Sleeve for Cortical and Cancellous Screws (for Large Fragment)	1
3408-04L	Hexagonal Screwdriver Shaft with Quick Coupling - 3.5mm Tip, Long	1
7-051-04	Trephine (for Large Fragment)	1
3402-000	T-Handle with Quick Coupling (for Large Fragment)	1
1472-054	Quick Coupling Shaft (for Large Fragment)	1
TQ-3.5	Torque Limiting Attachment, 4.0Nm, (for Large Fragment)	1
1472-064	Torque Screwdriver Handle (for Large Fragment)	1
3409-01L	Bending Iron, Left, (for Large Fragment)	1
3409-01R	Bending Iron, Right, (for Large Fragment)	1
1472-032	Articulated Tension Device (for Large Fragment)	1
1472-034	Articulated Tension Device Key (for Large Fragment)	1
2150-1008	Periosteal Elevator, Round, 8mm, (for Large Fragment)	1
2150-1016	Periosteal Elevator, Flat, 16mm, (for Large Fragment)	1

Codes	Set Consisting of:	Units
2107-1240	Reduction Forcep, Pointed, Ratchet Lock, 240mm, (for Large Fragment)	1
2106-1240	Reduction Forcep, Serrated, Speed Lock, 240mm, (for Large Fragment)	1
2105-000	Self-Centering Bone Holding Forcep, Speed Lock, (for Large Fragment)	2
1472-070	Hohmann Retractor, 44mm, (for Large Fragment)	1
2146-016	Hohmann Retractor, 16mm, (for Large Fragment)	1
7-051-03	Screw Holding Forcep (for Large Fragment)	1
7-157-01	Star Screwdriver Shaft, T25 for AV-Wiselock Large Fragment	1
3412-030	Drill Guide For Neutral and Loaded Position, DCP Ø4.5/3.2mm	1
7-050-05	T-Handle for Threaded Sleeve	1
7-157-02	Star Screwdriver Shaft, T25 for Large Fragment	1
7-157-03	4.3mm Variable Angle Double Drill Guide	1
7-157-04	Threaded Drill Sleeve, Ø4.3/5.0mm for AV-Wiselock Large Fragment	1
7-157-05	6.0Nm Torque Limiting Handle for AV-Wiselock Large Fragment	1
7-157-06	Screw Caddy for 5.0mm AV-Wiselock Large Fragment System	1
7-152-07	Instrument Trays for AV- Wise-Lock Large Fragment Instrument Set	3
7-152-08	Container for AV- Wise-Lock Large Fragment Instrument Set	1

**USA**

Auxein Inc.
1500 Nw 89th Court, Suite 107-108
Doral, Florida 33172
Tel: +1 305 395 6062
E Fax: +1 305 395 6262
Email: USoffice@auxein.com

MEXICO

Auxein México, S.A. de C.V.
Tepic 139 int 801, Colonia Roma Sur,
Alcaldía Cuauhtémoc, CDMX,
México, C.P. 06760
Tel: +521 55 7261 0318
Email: info@auxein.mx

INDIA

Auxein Medical Pvt. Ltd.
Plot No. 168-169-170, Phase-4,
Kundli Industrial Area,
HSIIDC, Sector-57, Sonapat - 131028, Haryana
Tel: +91 99106 43638 | Fax: +91 86077 70197
Email: info@auxein.com