

EPIPHYSEAL

**EPIPHYSEAL  
PLATE**



edition  
**2023**





# about us

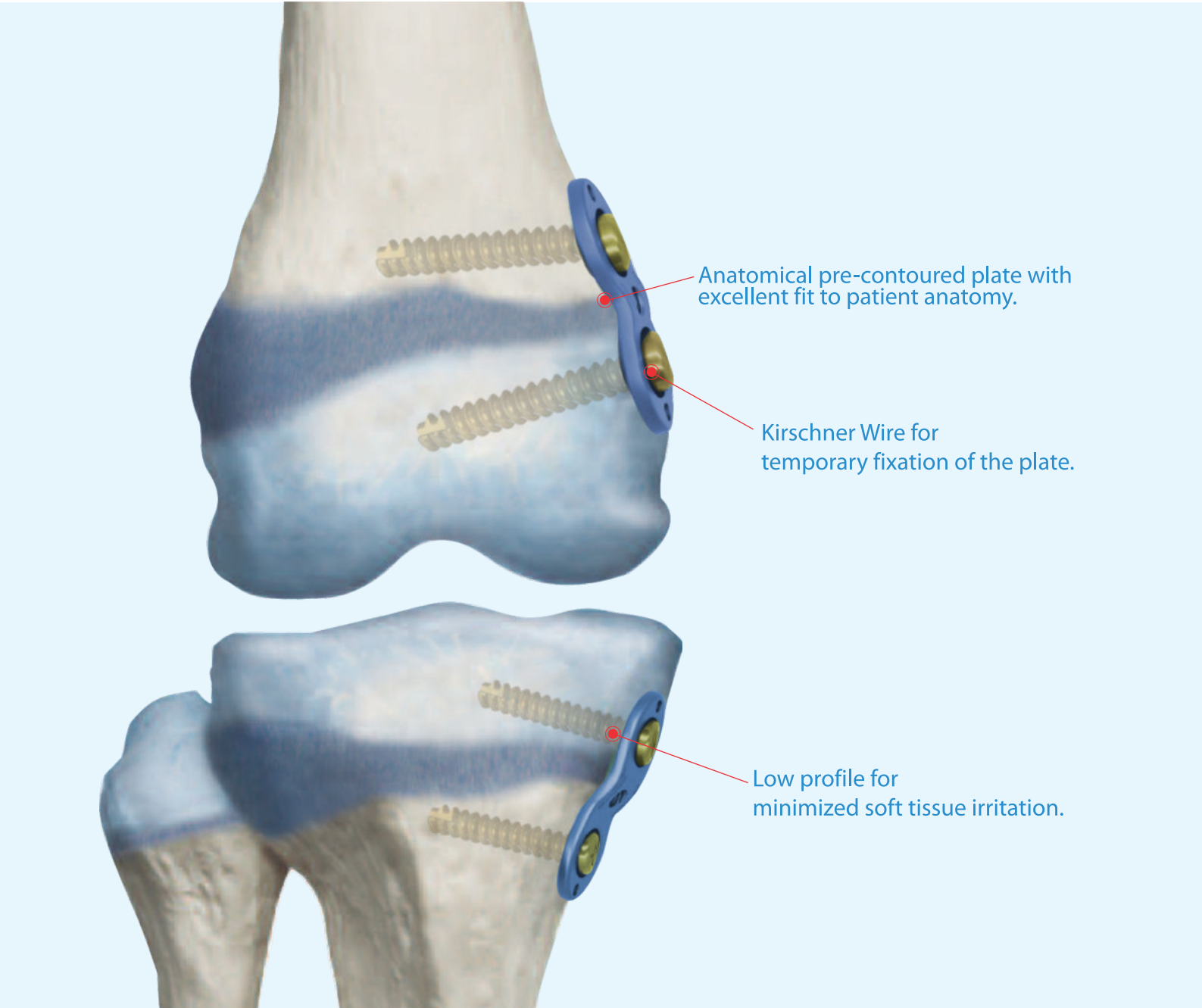
Auxein Medical is an integrated, research based, orthopaedic Implants & instruments manufacturing company, producing a wide range of quality, affordable generic implants, trusted by healthcare professionals and patients across geographies. It is the Company's constant endeavor to provide a wide basket of generic and our innovator products that exceed the highest expectations of customers in term of quality and safety. The company has world-class manufacturing unit established in india and serves customers in over 75 countries worldwide.

## Our Achievements



# **Orthopaedic Implants**

# Epiphyseal **Plate System**



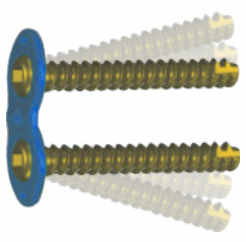
Anatomical pre-contoured plate with excellent fit to patient anatomy.

Kirschner Wire for temporary fixation of the plate.

Low profile for minimized soft tissue irritation.



4.5mm Cortex Screw, Self-tapping, Cannulated



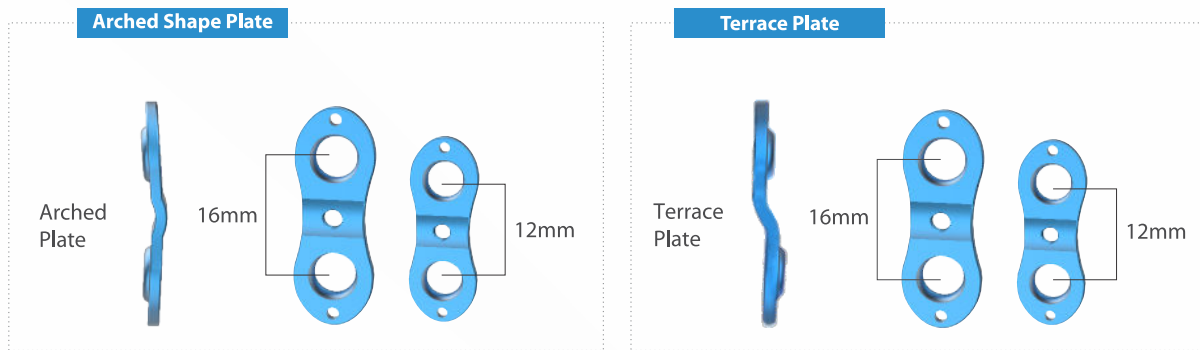
Diverging screws work as a hinge to facilitate physis growth and faster correction .



Cannulated design facilitate the screws inserting orientation with the help of kirschner wire.

**Warning**

This flyer is just for understanding the specific product features. For clinical usage, please refer to the surgical guide. Instruction by experienced surgeon is highly recommended.

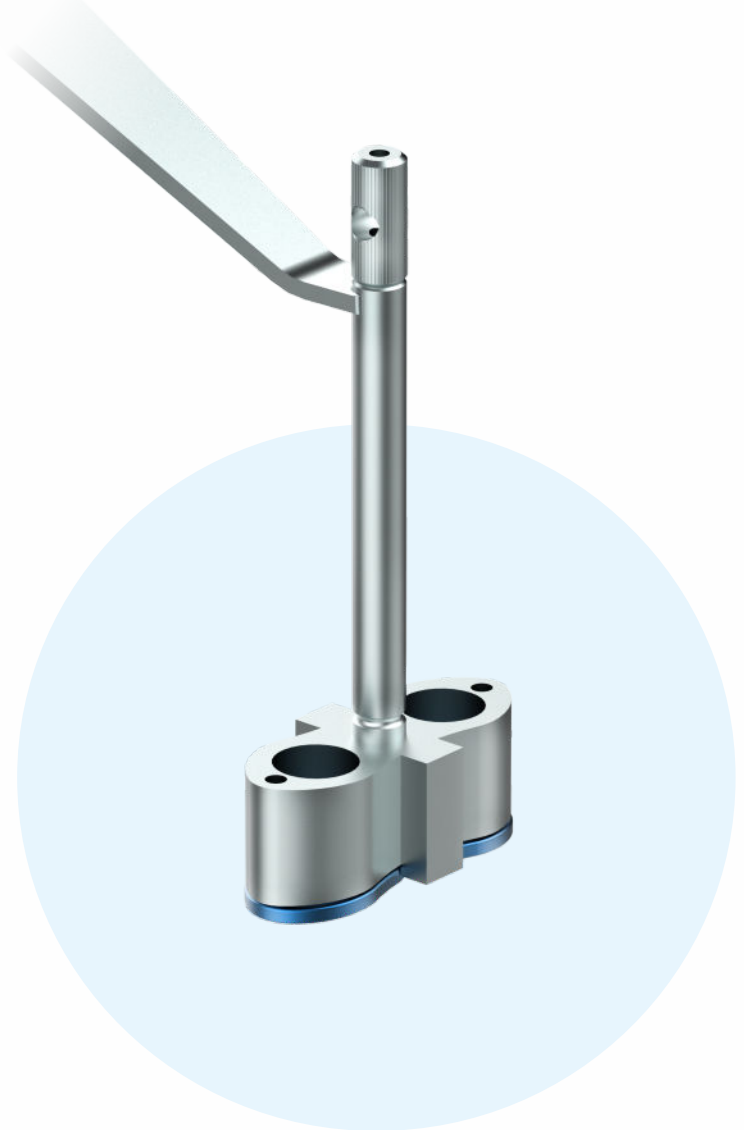


Available in Terrace and Arched Shape, Length 12mm or 16mm, Accommodating Different Patient Anatomies.



Minimally invasive technique facilitates operation and reduces post-surgical pain, allowing immediate mobilization and weight bearing.

Elevated design reduces contact with growth plate and periosteum.



## Indications

Gradual correction of pediatric deformities in upper and lower extremities:

- Ankle valgus
- Cubitus varus (post supracondylar fracture)
- Knee valgus, varus, oblique plane, flexion deformity, recurvatum

Epiphyseal Plate



Item Code	Item Name	Length (mm)
<b>EP-001</b>	Epiphyseal Plate, Terrace Shape	12
<b>EP-002</b>	Epiphyseal Plate, Terrace Shape	16
<b>EP-003</b>	Epiphyseal Plate, Arc-Bridge Shape	12
<b>EP-004</b>	Epiphyseal Plate, Arc-Bridge Shape	16

**STERILE**

Item Code	Item Name	Length (mm)
<b>EP-001-S</b>	Epiphyseal Plate, Terrace Shape	12
<b>EP-002-S</b>	Epiphyseal Plate, Terrace Shape	16
<b>EP-003-S</b>	Epiphyseal Plate, Arc-Bridge Shape	12
<b>EP-004-S</b>	Epiphyseal Plate, Arc-Bridge Shape	16



4.5mm Cortex Screw, Self-Tapping, Cannulated (3.0mm Hex), Titanium



Item Code	Length (mm)
<b>EPS-001</b>	16
<b>13-003-018TI</b>	18
<b>EPS-002</b>	20
<b>13-003-022TI</b>	22
<b>EPS-003</b>	24
<b>13-003-026TI</b>	26
<b>EPS-004</b>	28
<b>13-003-030TI</b>	30
<b>EPS-005</b>	32
<b>13-003-034TI</b>	34
<b>EPS-006</b>	36
<b>EPS-007</b>	40
<b>13-003-045TI</b>	45
<b>13-003-050TI</b>	50

**STERILE**

Item Code	Length (mm)
<b>EPS-001-S</b>	16
<b>13-003-018TI-S</b>	18
<b>EPS-002-S</b>	20
<b>13-003-022TI-S</b>	22
<b>EPS-003-S</b>	24
<b>13-003-026TI-S</b>	26
<b>EPS-004-S</b>	28
<b>13-003-030TI-S</b>	30
<b>EPS-005-S</b>	32
<b>13-003-034TI-S</b>	34
<b>EPS-006-S</b>	36
<b>EPS-007-S</b>	40
<b>13-003-045TI-S</b>	45
<b>13-003-050TI-S</b>	50

**13-028 Epiphyseal Plate Implant Set**


Item Code	Item Name	Units
<b>EP-001</b>	Epiphyseal Plate, Terrace Shape, Length 12mm, Titanium	1
<b>EP-002</b>	Epiphyseal Plate, Terrace Shape, Length 16mm, Titanium	1
<b>EP-003</b>	Epiphyseal Plate, Arc-Bridge Shape, Length 12mm, Titanium	1
<b>EP-004</b>	Epiphyseal Plate, Arc-Bridge Shape, Length 16mm, Titanium	1
<b>EPS-001</b>	4.5mm Cortex Screw, Self-Tapping, Cannulated, Length 16mm(3.0mm Hex),Titanium	6
<b>EPS-002</b>	4.5mm Cortex Screw, Self-Tapping, Cannulated, Length 20mm(3.0mm Hex),Titanium	6
<b>EPS-003</b>	4.5mm Cortex Screw, Self-Tapping, Cannulated, Length 24mm(3.0mm Hex),Titanium	6
<b>EPS-004</b>	4.5mm Cortex Screw, Self-Tapping, Cannulated, Length 28mm(3.0mm Hex),Titanium	6
<b>EPS-005</b>	4.5mm Cortex Screw, Self-Tapping, Cannulated, Length 32mm(3.0mm Hex),Titanium	6
<b>EPS-006</b>	4.5mm Cortex Screw, Self-Tapping, Cannulated, Length 36mm(3.0mm Hex),Titanium	6
<b>EPS-007</b>	4.5mm Cortex Screw, Self-Tapping, Cannulated, Length 40mm(3.0mm Hex),Titanium	6
<b>7-040-01</b>	Implant Box for Epiphyseal Plate System	1

**EPI-001**      Aiming Device, Terrace Shape, Small



**EPI-002**      Aiming Device, Terrace Shape, Large



**EPI-003**      Aiming Device, Arc-Bridge Shape, Small



**EPI-004**      Aiming Device, Arc-bridge Shape, Large



**EPI-005**      Handle for Aiming Device



**EPI-006**      Cannulated Fixation Bolt, Ø1.5/ 3.0mm



**EPI-007** Guide Wire Ø1.5mm x Length 150mm



**EPI-008** Wire Sleeve, Ø1.5mm



**EPI-009** Depth Gauge measuring upto 50mm for Epiphyseal Plate



**EPI-010** Protection Sleeve for Drill Guide Ø6.1/ 7.3mm for Epiphyseal Plate



**EPI-011** Cannulated Drill Bit Ø3.0mm x Length 200mm



**EPI-018** Stopper for Cannulated Drill Bit Ø3.0mm



**EPI-012** Drill Sleeve for Cannulated Drill Bit Ø3.0mm



**EPI-014** Screw Forcep for Epiphyseal Plate



**EPI-015** Cannulated Screwdriver, Hex 3.0mm, for Epiphyseal Plate



**EPI-016** Allen key, Hex 2.5mm for Epiphyseal Plate

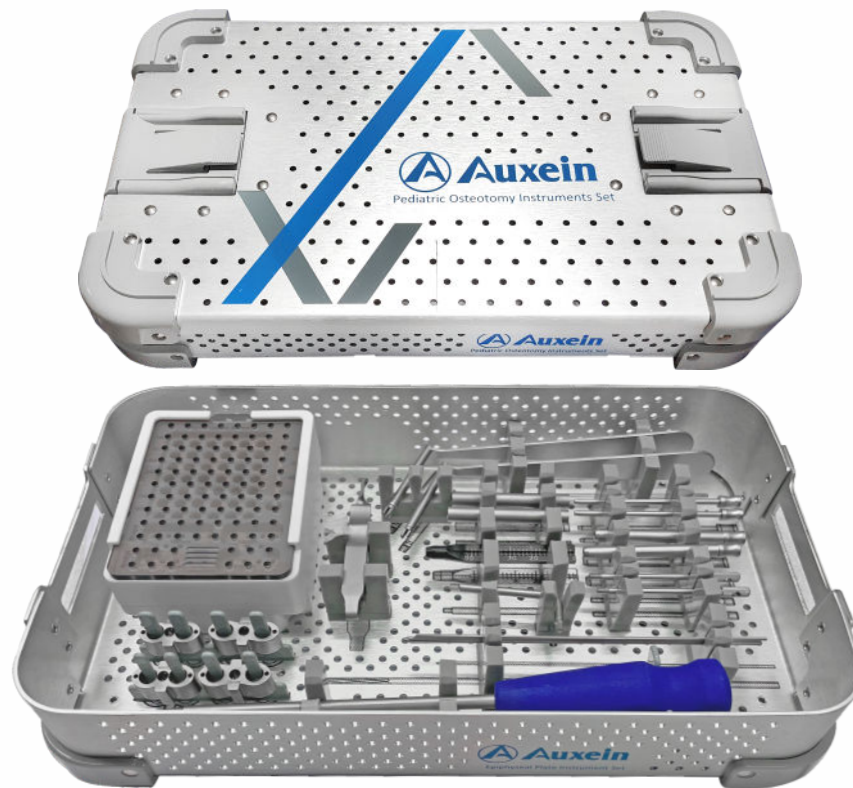


**7-040-01** Implant Box for Epiphyseal Plate System



**EPI-017** Container for Epiphyseal Plate Instrument Set



**INS-EPS Epiphyseal Plate Instrument Set**


Item Code	Item Name	Unit
<b>EPI-001</b>	Aiming Device, Terrace Shape, Small	1
<b>EPI-002</b>	Aiming Device, Terrace Shape, Large	1
<b>EPI-003</b>	Aiming Device, Arc-Bridge Shape, Small	1
<b>EPI-004</b>	Aiming Device, Arc-bridge Shape, Large	1
<b>EPI-005</b>	Handle for Aiming Device	2
<b>EPI-006</b>	Cannulated Fixation Bolt, Ø1.5/ 3.0mm	2
<b>EPI-007</b>	Guide Wire Ø1.5mm x Length 150mm	3
<b>EPI-008</b>	Wire Sleeve, Ø1.5mm	2
<b>EPI-009</b>	Depth Gauge measuring upto 50mm for Epiphyseal Plate	1
<b>EPI-010</b>	Protection Sleeve for Drill Guide Ø6.1/ 7.3mm for Epiphyseal Plate	2
<b>EPI-011</b>	Cannulated Drill Bit Ø3.0mm x Length 200mm	2
<b>EPI-018</b>	Stopper for Cannulated Drill Bit Ø3.0mm	1
<b>EPI-012</b>	Drill Sleeve for Cannulated Drill Bit Ø3.0mm	2
<b>EPI-014</b>	Screw Forcep for Epiphyseal Plate	1
<b>EPI-015</b>	Cannulated Screwdriver, Hex 3.0mm, for Epiphyseal Plate	1
<b>EPI-016</b>	Allen key, Hex 2.5mm for Epiphyseal Plate	1
<b>7-040-01</b>	Implant Box for Epiphyseal Plate System	1
<b>EPI-017</b>	Container for Epiphyseal Plate Instrument Set	1



**USA**

Auxein Inc.  
1500 Nw 89th Court, Suite 107-108  
Doral, Florida 33172  
Tel: +1 305 395 6062  
E Fax: +1 305 395 6262  
Email: USoffice@auxein.com

**MEXICO**

Auxein México, S.A. de C.V.  
Tepic 139 int 801, Colonia Roma Sur,  
Alcaldía Cuauhtémoc, CDMX,  
México, C.P. 06760  
Tel: +521 55 7261 0318  
Email: info@auxein.mx

**INDIA**

Auxein Medical Pvt. Ltd.  
Plot No. 168-169-170, Phase-4,  
Kundli Industrial Area,  
HSIIDC, Sector-57, Sonapat - 131028, Haryana  
Tel: +91 99106 43638 | Fax: +91 86077 70197  
Email: info@auxein.com