

# HIP PROSTHESIS

## HIP PROSTHESIS THOMPSON



edition  
2022

 **Auxein**<sup>®</sup>

The first part of the document discusses the importance of maintaining accurate records of all transactions. It emphasizes that every entry, no matter how small, should be recorded to ensure the integrity of the financial statements. This includes not only sales and purchases but also expenses and income. The document provides a detailed list of items that should be tracked, such as inventory levels, accounts payable, and accounts receivable. It also outlines the procedures for reconciling these accounts and resolving any discrepancies.

The second part of the document focuses on the preparation of financial statements. It explains the different types of statements, including the balance sheet, income statement, and cash flow statement, and how they are derived from the recorded transactions. It provides a step-by-step guide to the calculation of each statement, ensuring that all necessary adjustments are made. The document also discusses the importance of presenting the information in a clear and concise manner, using appropriate accounting principles and standards.

The final part of the document addresses the audit process. It describes the role of the auditor and the steps involved in conducting an audit. It emphasizes the need for transparency and cooperation between the company and the auditor. The document provides a checklist of items that should be reviewed during the audit, including the accuracy of the records, the completeness of the disclosures, and the adherence to accounting standards. It also discusses the consequences of an audit failure and the steps that should be taken to address any issues identified.

# about us

Auxein Medical is an integrated, research based, orthopaedic Implants & Instruments manufacturing company, producing a wide range of quality, affordable generic implants, trusted by healthcare professionals and patients across geographies. It is the Company's constant endeavor to provide a wide basket of generic and innovator products that exceed the highest expectations of our customers in term of quality and safety. The company has world-class manufacturing unit established in India and serves customers in over 60 countries worldwide.

## **Our Achievements**

- US FDA 510K APPROVED •**  
*(Arthroscopy, Spine, Nailing, Locking Plates & Screws)*
- EC Certificate - Class IIa & IIb •
- ISO 13485:2016 •
- ISO 9001:2015 •
- India FDA Approved •
- India MDR 2017 •

# **Orthopaedic Implants**

**Thompson Hip Prosthesis - Standard Stem, Regular Finish**

Head Dia (mm)	Standard Stem	
	Sterile	Non-Sterile
37	<b>300.037</b>	<b>300.137</b>
38	<b>300.038</b>	<b>300.138</b>
39	<b>300.039</b>	<b>300.139</b>
40	<b>300.040</b>	<b>300.140</b>
41	<b>300.041</b>	<b>300.141</b>
42	<b>300.042</b>	<b>300.142</b>
43	<b>300.043</b>	<b>300.143</b>
44	<b>300.044</b>	<b>300.144</b>
45	<b>300.045</b>	<b>300.145</b>
46	<b>300.046</b>	<b>300.146</b>
47	<b>300.047</b>	<b>300.147</b>
48	<b>300.048</b>	<b>300.148</b>
49	<b>300.049</b>	<b>300.149</b>
50	<b>300.050</b>	<b>300.150</b>
51	<b>300.051</b>	<b>300.151</b>
52	<b>300.052</b>	<b>300.152</b>
53	<b>300.053</b>	<b>300.153</b>
54	<b>300.054</b>	<b>300.154</b>
55	<b>300.055</b>	<b>300.155</b>


**Thompson Hip Prosthesis - Standard Stem, Satin Finish**

Head Dia (mm)	Standard Stem	
	Sterile	Non-Sterile
37	<b>300.037S</b>	<b>300.137S</b>
38	<b>300.038S</b>	<b>300.138S</b>
39	<b>300.039S</b>	<b>300.139S</b>
40	<b>300.040S</b>	<b>300.140S</b>
41	<b>300.041S</b>	<b>300.141S</b>
42	<b>300.042S</b>	<b>300.142S</b>
43	<b>300.043S</b>	<b>300.143S</b>
44	<b>300.044S</b>	<b>300.144S</b>
45	<b>300.045S</b>	<b>300.145S</b>
46	<b>300.046S</b>	<b>300.146S</b>
47	<b>300.047S</b>	<b>300.147S</b>
48	<b>300.048S</b>	<b>300.148S</b>
49	<b>300.049S</b>	<b>300.149S</b>
50	<b>300.050S</b>	<b>300.150S</b>
51	<b>300.051S</b>	<b>300.151S</b>
52	<b>300.052S</b>	<b>300.152S</b>
53	<b>300.053S</b>	<b>300.153S</b>
54	<b>300.054S</b>	<b>300.154S</b>
55	<b>300.055S</b>	<b>300.155S</b>



**Thompson Hip Prosthesis - Full Collar, Regular Finish**

Head Dia (mm)	Full Collar	
	Sterile	Non-Sterile
37	<b>301.037</b>	<b>301.137</b>
38	<b>301.038</b>	<b>301.138</b>
39	<b>301.039</b>	<b>301.139</b>
40	<b>301.040</b>	<b>301.140</b>
41	<b>301.041</b>	<b>301.141</b>
42	<b>301.042</b>	<b>301.142</b>
43	<b>301.043</b>	<b>301.143</b>
44	<b>301.044</b>	<b>301.144</b>
45	<b>301.045</b>	<b>301.145</b>
46	<b>301.046</b>	<b>301.146</b>
47	<b>301.047</b>	<b>301.147</b>
48	<b>301.048</b>	<b>301.148</b>
49	<b>301.049</b>	<b>301.149</b>
50	<b>301.050</b>	<b>301.150</b>
51	<b>301.051</b>	<b>301.151</b>
52	<b>301.052</b>	<b>301.152</b>
53	<b>301.053</b>	<b>301.153</b>
54	<b>301.054</b>	<b>301.154</b>
55	<b>301.055</b>	<b>301.155</b>


**Thompson Hip Prosthesis - Full Collar, Satin Finish**

Head Dia (mm)	Full Collar	
	Sterile	Non-Sterile
37	<b>301.037S</b>	<b>301.137S</b>
38	<b>301.038S</b>	<b>301.138S</b>
39	<b>301.039S</b>	<b>301.139S</b>
40	<b>301.040S</b>	<b>301.140S</b>
41	<b>301.041S</b>	<b>301.141S</b>
42	<b>301.042S</b>	<b>301.142S</b>
43	<b>301.043S</b>	<b>301.143S</b>
44	<b>301.044S</b>	<b>301.144S</b>
45	<b>301.045S</b>	<b>301.145S</b>
46	<b>301.046S</b>	<b>301.146S</b>
47	<b>301.047S</b>	<b>301.147S</b>
48	<b>301.048S</b>	<b>301.148S</b>
49	<b>301.049S</b>	<b>301.149S</b>
50	<b>301.050S</b>	<b>301.150S</b>
51	<b>301.051S</b>	<b>301.151S</b>
52	<b>301.052S</b>	<b>301.152S</b>
53	<b>301.053S</b>	<b>301.153S</b>
54	<b>301.054S</b>	<b>301.154S</b>
55	<b>301.055S</b>	<b>301.155S</b>



**Thompson Hip Prosthesis - Plain Stem, Regular Finish**

Head Dia (mm)	Plain Stem	
	Sterile	Non-Sterile
37	<b>331.037</b>	<b>331.137</b>
38	<b>331.038</b>	<b>331.138</b>
39	<b>331.039</b>	<b>331.139</b>
40	<b>331.040</b>	<b>331.140</b>
41	<b>331.041</b>	<b>331.141</b>
42	<b>331.042</b>	<b>331.142</b>
43	<b>331.043</b>	<b>331.143</b>
44	<b>331.044</b>	<b>331.144</b>
45	<b>331.045</b>	<b>331.145</b>
46	<b>331.046</b>	<b>331.146</b>
47	<b>331.047</b>	<b>331.147</b>
48	<b>331.048</b>	<b>331.148</b>
49	<b>331.049</b>	<b>331.149</b>
50	<b>331.050</b>	<b>331.150</b>
51	<b>331.051</b>	<b>331.151</b>
52	<b>331.052</b>	<b>331.152</b>
53	<b>331.053</b>	<b>331.153</b>
54	<b>331.054</b>	<b>331.154</b>
55	<b>331.055</b>	<b>331.155</b>


**Thompson Hip Prosthesis - Plain Stem, Satin Finish**

Head Dia (mm)	Plain Stem	
	Sterile	Non-Sterile
37	<b>331.037S</b>	<b>331.137S</b>
38	<b>331.038S</b>	<b>331.138S</b>
39	<b>331.039S</b>	<b>331.139S</b>
40	<b>331.040S</b>	<b>331.140S</b>
41	<b>331.041S</b>	<b>331.141S</b>
42	<b>331.042S</b>	<b>331.142S</b>
43	<b>331.043S</b>	<b>331.143S</b>
44	<b>331.044S</b>	<b>331.144S</b>
45	<b>331.045S</b>	<b>331.145S</b>
46	<b>331.046S</b>	<b>331.146S</b>
47	<b>331.047S</b>	<b>331.147S</b>
48	<b>331.048S</b>	<b>331.148S</b>
49	<b>331.049S</b>	<b>331.149S</b>
50	<b>331.050S</b>	<b>331.150S</b>
51	<b>331.051S</b>	<b>331.151S</b>
52	<b>331.052S</b>	<b>331.152S</b>
53	<b>331.053S</b>	<b>331.153S</b>
54	<b>331.054S</b>	<b>331.154S</b>
55	<b>331.055S</b>	<b>331.155S</b>



**Thompson Hip Prosthesis - Narrow Stem, Regular Finish**

Head Dia (mm)	Narrow Stem	
	Sterile	Non-Sterile
37	<b>330.037</b>	<b>330.137</b>
38	<b>330.038</b>	<b>330.138</b>
39	<b>330.039</b>	<b>330.139</b>
40	<b>330.040</b>	<b>330.140</b>
41	<b>330.041</b>	<b>330.141</b>
42	<b>330.042</b>	<b>330.142</b>
43	<b>330.043</b>	<b>330.143</b>
44	<b>330.044</b>	<b>330.144</b>
45	<b>330.045</b>	<b>330.145</b>
46	<b>330.046</b>	<b>330.146</b>
47	<b>330.047</b>	<b>330.147</b>
48	<b>330.048</b>	<b>330.148</b>
49	<b>330.049</b>	<b>330.149</b>
50	<b>330.050</b>	<b>330.150</b>
51	<b>330.051</b>	<b>330.151</b>
52	<b>330.052</b>	<b>330.152</b>
53	<b>330.053</b>	<b>330.153</b>
54	<b>330.054</b>	<b>330.154</b>
55	<b>330.055</b>	<b>330.155</b>


**Thompson Hip Prosthesis - Narrow Stem, Satin Finish**

Head Dia (mm)	Narrow Stem	
	Sterile	Non-Sterile
37	<b>330.037S</b>	<b>330.137S</b>
38	<b>330.038S</b>	<b>330.138S</b>
39	<b>330.039S</b>	<b>330.139S</b>
40	<b>330.040S</b>	<b>330.140S</b>
41	<b>330.041S</b>	<b>330.141S</b>
42	<b>330.042S</b>	<b>330.142S</b>
43	<b>330.043S</b>	<b>330.143S</b>
44	<b>330.044S</b>	<b>330.144S</b>
45	<b>330.045S</b>	<b>330.145S</b>
46	<b>330.046S</b>	<b>330.146S</b>
47	<b>330.047S</b>	<b>330.147S</b>
48	<b>330.048S</b>	<b>330.148S</b>
49	<b>330.049S</b>	<b>330.149S</b>
50	<b>330.050S</b>	<b>330.150S</b>
51	<b>330.051S</b>	<b>330.151S</b>
52	<b>330.052S</b>	<b>330.152S</b>
53	<b>330.053S</b>	<b>330.153S</b>
54	<b>330.054S</b>	<b>330.154S</b>
55	<b>330.055S</b>	<b>330.155S</b>





**7-065 : Thompson Hip Prosthesis Instrument Set**

**2304-04** Rasp For Thompson



**2304-07** Murphy Lane Bone Skid



**2304-06** Moore Hollow Chisel



**2304-08** Judget Auger Extractor



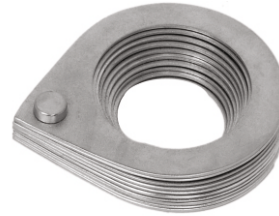
**2304-10** Spare Hook For Extractor



**2304-12** Impactor- Nylon Faced



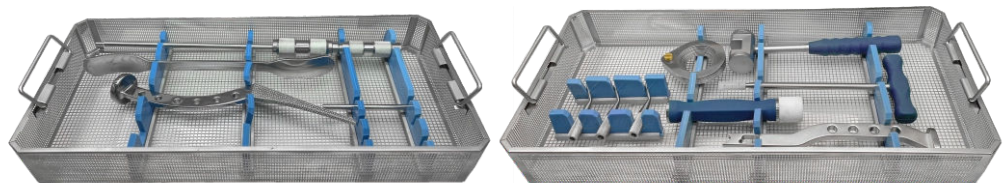
**2304-11** Measuring Gauge For Prosthesis



**2304-09** Extractor with Two Hooks



**7-107-01** Instrument Tray, 540mm x 255mm x55mm



**7-106-01** Aluminium Sterilization Container, 560mm x 270mm x 150mm



### 7-065 : Thompson Hip Prosthesis Instrument Set

Item Code	Item Name	Unit
<b>2304-04</b>	Rasp For Thompson	1
<b>2304-07</b>	Murphy Lane Bone Skid	1
<b>2304-06</b>	Moore Hollow Chisel	1
<b>2304-08</b>	Judget Auger Extractor	1
<b>2304-10</b>	Spare Hook For Extractor	1
<b>2304-12</b>	Impactor- Nylon Faced	1
<b>2304-11</b>	Measuring Gauge For Prosthesis	1
<b>2304-09</b>	Extractor with Two Hooks	1
<b>7-107-01</b>	Instrument Tray, 540mm x 255mm x55mm	2
<b>7-106-01</b>	Aluminium Sterilization Container, 560mm x 270mm x 150mm	1



**USA**

Auxein Inc.  
1500 Nw 89th Court, Suite 107-108  
Doral, Florida 33172  
Tel: +1 305 395 6062  
E Fax: +1 305 395 6262  
Email: USoffice@auxein.com

**MEXICO**

Auxein México, S.A. de C.V.  
Tepic 139 int 801, Colonia Roma Sur,  
Alcaldía Cuauhtémoc, CDMX,  
México, C.P. 06760  
Tel: +521 55 7261 0318  
Email: info@auxein.mx

**INDIA**

Auxein Medical Pvt. Ltd.  
Plot No. 168-169-170, Phase-4,  
Kundli Industrial Area,  
HSIIDC, Sector-57, Sonapat - 131028, Haryana  
Tel: +91 99106 43638 | Fax: +91 86077 70197  
Email: info@auxein.com