

# REGEX

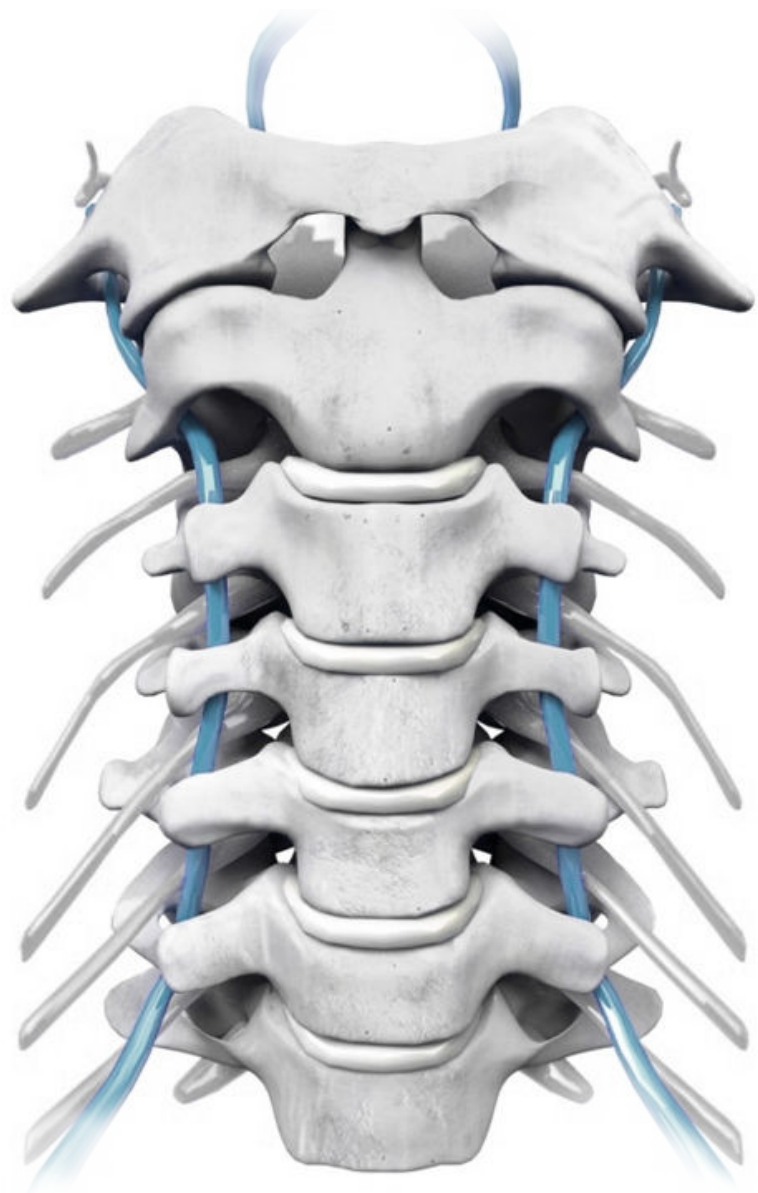
## Anterior Cervical Plate System



### System Indications

REGEX is a versatile Anterior Cervical plate system that is designed to provide the surgeon with flexibility in treatment options as well as instill confidence that the construct is fully locked and secure. The low profile plate system features innovative self locking slides allowing the surgeon to visually confirm the screws are locked in place creating a more secure construct. When combined with either fixed or variable angle screws, a variety of constructs can be created including rigid and semi-constrained constructs as well as a combination of both rigid and semi-constrained. The cervical plate temporarily creates a unilateral construct to provide stability to the cervical spine while promoting spinal fusion.

- Surgical approach: Anterior
- Number of used vertebrae: 1 Level
- Surgical application: Cervical



## Plates

### REGEX-Anterior Cervical Plate, Level-I

Code	Length
4-033-12TI	12mm
4-033-14TI	14mm
4-033-16TI	16mm
4-033-18TI	18mm
4-033-20TI	20mm
4-033-22TI	22mm
4-033-24TI	24mm



### REGEX-Anterior Cervical Plate, Level-II

Code	Length
4-034-26TI	26mm
4-034-28TI	28mm
4-034-30TI	30mm
4-034-32TI	32mm
4-034-34TI	34mm
4-034-37TI	37mm
4-034-40TI	40mm
4-034-43TI	43mm
4-034-46TI	46mm



### REGEX-Anterior Cervical Plate, Level-III

Code	Length
4-035-40TI	40mm
4-035-43TI	43mm
4-035-46TI	46mm
4-035-49TI	49mm
4-035-52TI	52mm
4-035-55TI	55mm
4-035-58TI	58mm
4-035-61TI	61mm
4-035-64TI	64mm
4-035-67TI	67mm



**REGEX-Anterior Cervical Plate, Level-IV**

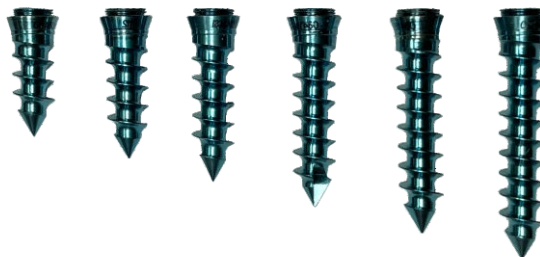
Code	Length
4-036-60TI	60mm
4-036-64TI	64mm
4-036-68TI	68mm
4-036-72TI	72mm
4-036-76TI	76mm
4-036-80TI	80mm
4-036-84TI	84mm


**Screws**
**4.0mm REGEX-Bone Screw, Self-Drilling, Variable Angled**

Code	Length
4-037-10TI	10mm
4-037-12TI	12mm
4-037-14TI	14mm
4-037-16TI	16mm
4-037-18TI	18mm
4-037-20TI	20mm


**4.0mm REGEX-Bone Screw, Self-Drilling, Fixed Angled**

Code	Length
4-038-10TI	10mm
4-038-12TI	12mm
4-038-14TI	14mm
4-038-16TI	16mm
4-038-18TI	18mm
4-038-20TI	20mm



**4.5mm REGEX-Bone Screw, Self-Drilling, Variable Angled**

Code	Length
4-039-12TI	12mm
4-039-14TI	14mm
4-039-16TI	16mm
4-039-18TI	18mm
4-039-20TI	20mm


**4.5mm REGEX-Bone Screw, Self-Drilling, Fixed Angled**

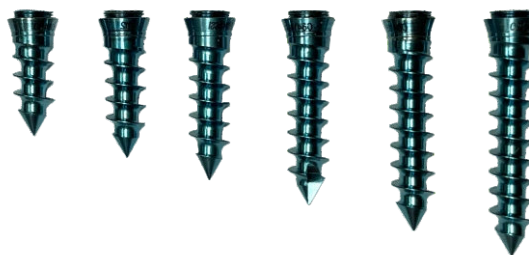
Code	Length
4-040-12TI	12mm
4-040-14TI	14mm
4-040-16TI	16mm
4-040-18TI	18mm
4-040-20TI	20mm


**4.0mm REGEX-Bone Screw, Self-Tapping, Variable Angled**

Code	Length
4-087-10TI	10mm
4-087-12TI	12mm
4-087-14TI	14mm
4-087-16TI	16mm
4-087-18TI	18mm
4-087-20TI	20mm


**4.0mm REGEX-Bone Screw, Self-Tapping, Fixed Angled**

Code	Length
4-088-10TI	10mm
4-088-12TI	12mm
4-088-14TI	14mm
4-088-16TI	16mm
4-088-18TI	18mm
4-088-20TI	20mm



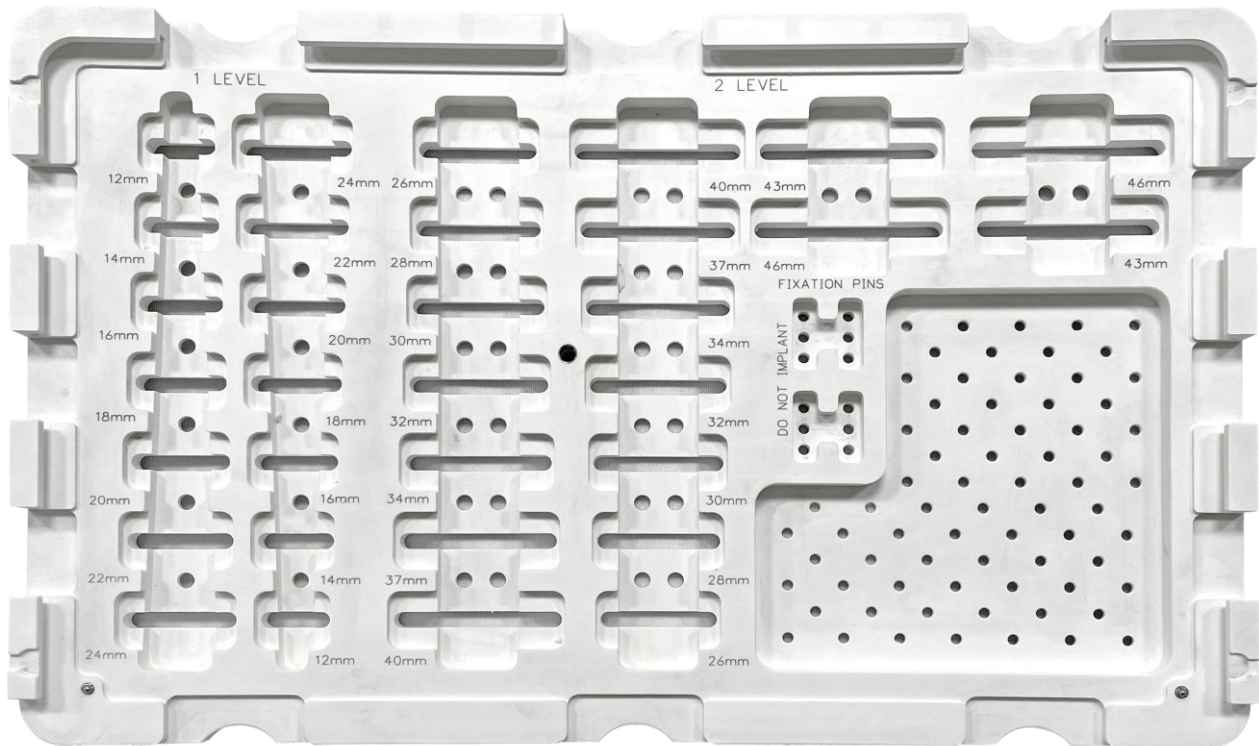
**4.5mm REGEX-Bone Screw, Self-Tapping, Variable Angled**

Code	Length
<b>4-089-12TI</b>	12mm
<b>4-089-14TI</b>	14mm
<b>4-089-16TI</b>	16mm
<b>4-089-18TI</b>	18mm
<b>4-089-20TI</b>	20mm


**4.5mm REGEX-Bone Screw, Self-Tapping, Fixed Angled**

Code	Length
<b>4-090-12TI</b>	12mm
<b>4-090-14TI</b>	14mm
<b>4-090-16TI</b>	16mm
<b>4-090-18TI</b>	18mm
<b>4-090-20TI</b>	20mm

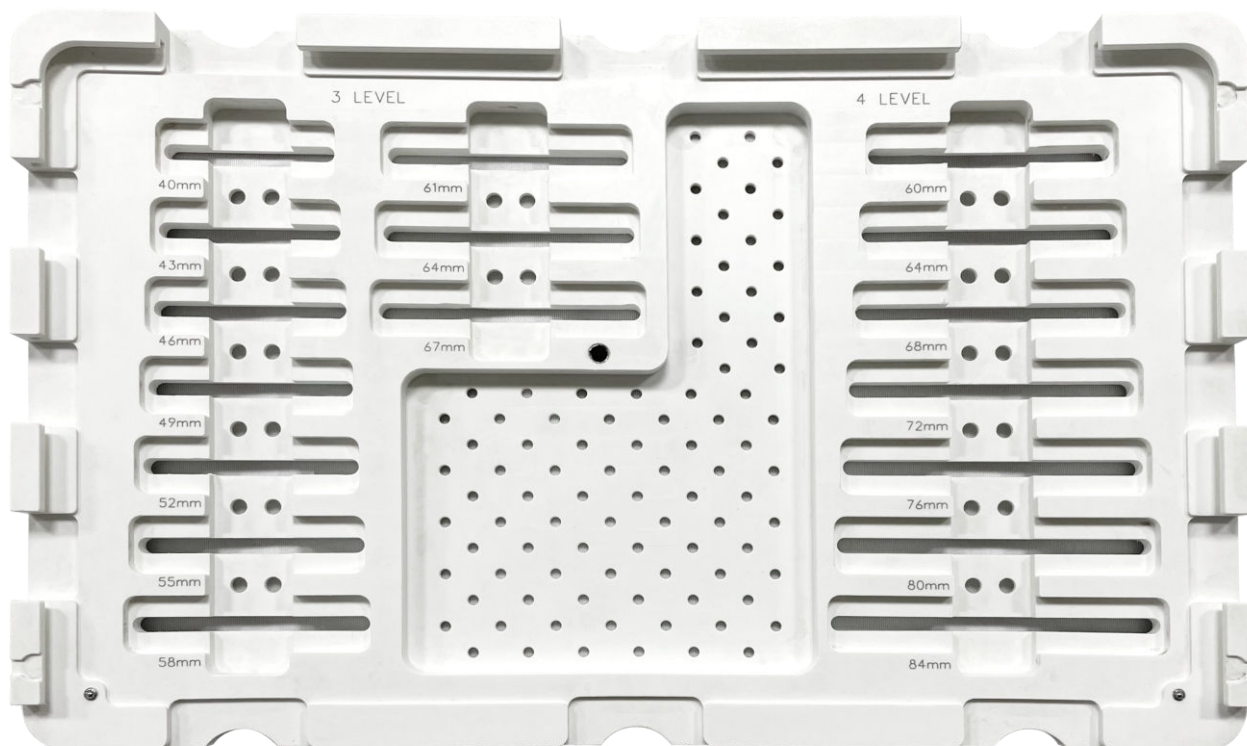


**4-041-01 REGEX Implant Tray Level 1 & 2 Plates**

**Level 1**

Code	Length	Qty.
<b>4-033-12TI</b>	12mm	2
<b>4-033-14TI</b>	14mm	2
<b>4-033-16TI</b>	16mm	2
<b>4-033-18TI</b>	18mm	2
<b>4-033-20TI</b>	20mm	2
<b>4-033-22TI</b>	22mm	2
<b>4-033-24TI</b>	24mm	2

**Level 2**

Code	Length	Qty.
<b>4-034-26TI</b>	26mm	2
<b>4-034-28TI</b>	28mm	2
<b>4-034-30TI</b>	30mm	2
<b>4-034-32TI</b>	32mm	2
<b>4-034-34TI</b>	34mm	2
<b>4-034-37TI</b>	37mm	2
<b>4-034-40TI</b>	40mm	2
<b>4-034-43TI</b>	43mm	2
<b>4-034-46TI</b>	46mm	2

**4-041-02 REGEX Implant Tray Level 3 & 4 Plates**

**Level 3**

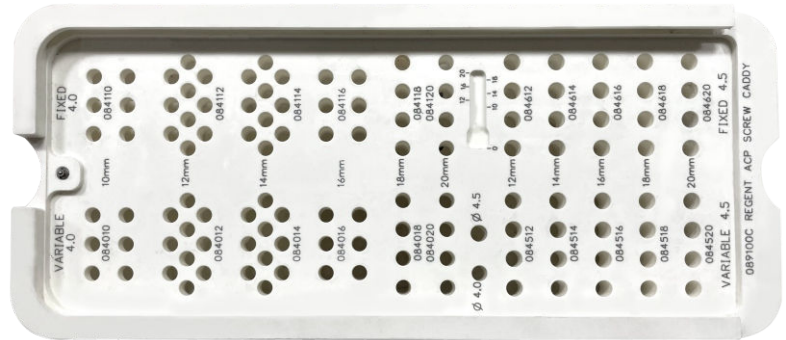
Code	Length	Qty.
<b>4-035-40TI</b>	40mm	1
<b>4-035-43TI</b>	43mm	1
<b>4-035-46TI</b>	46mm	1
<b>4-035-49TI</b>	49mm	1
<b>4-035-52TI</b>	52mm	1
<b>4-035-55TI</b>	55mm	1
<b>4-035-58TI</b>	58mm	1
<b>4-035-61TI</b>	61mm	1
<b>4-035-64TI</b>	64mm	1
<b>4-035-67TI</b>	67mm	1

**Level 4**

Code	Length	Qty.
<b>4-036-60TI</b>	60mm	1
<b>4-036-64TI</b>	64mm	1
<b>4-036-68TI</b>	68mm	1
<b>4-036-72TI</b>	72mm	1
<b>4-036-76TI</b>	76mm	1
<b>4-036-80TI</b>	80mm	1
<b>4-036-84TI</b>	84mm	1

**4-041-03 REGEX Implant Screws Tray**
**4.0mm REGEX-Bone Screws,  
Self-Drilling, Variable Angled**

Code	Length	Qty.
4-037-10TI	10mm	6
4-037-12TI	12mm	10
4-037-14TI	14mm	10
4-037-16TI	16mm	6
4-037-18TI	18mm	4
4-037-20TI	20mm	4


**4.0mm REGEX-Bone Screws,  
Self-Drilling, Fixed Angled**

Code	Length	Qty.
4-038-10TI	10mm	6
4-038-12TI	12mm	10
4-038-14TI	14mm	10
4-038-16TI	16mm	6
4-038-18TI	18mm	4
4-038-20TI	20mm	4

**4.0mm REGEX-Bone Screws,  
Self-Tapping, Variable Angled**

Code	Length	Qty.
4-087-10TI	10mm	6
4-087-12TI	12mm	10
4-087-14TI	14mm	10
4-087-16TI	16mm	6
4-087-18TI	18mm	4
4-087-20TI	20mm	4

**4.0mm REGEX-Bone Screws,  
Self-Tapping, Fixed Angled**

Code	Length	Qty.
4-088-10TI	10mm	6
4-088-12TI	12mm	10
4-088-14TI	14mm	10
4-088-16TI	16mm	6
4-088-18TI	18mm	4
4-088-20TI	20mm	4

**4.5mm REGEX-Bone Screws,  
Self-Drilling, Variable Angled**

Code	Length	Qty.
4-039-12TI	12mm	4
4-039-14TI	14mm	4
4-039-16TI	16mm	4
4-039-18TI	18mm	4
4-039-20TI	20mm	4

**OR**

**4.5mm REGEX-Bone Screws,  
Self-Tapping, Variable Angled**

Code	Length	Qty.
4-089-12TI	12mm	4
4-089-14TI	14mm	4
4-089-16TI	16mm	4
4-089-18TI	18mm	4
4-089-20TI	20mm	4

**4.5mm REGEX-Bone Screws,  
Self-Tapping, Fixed Angled**

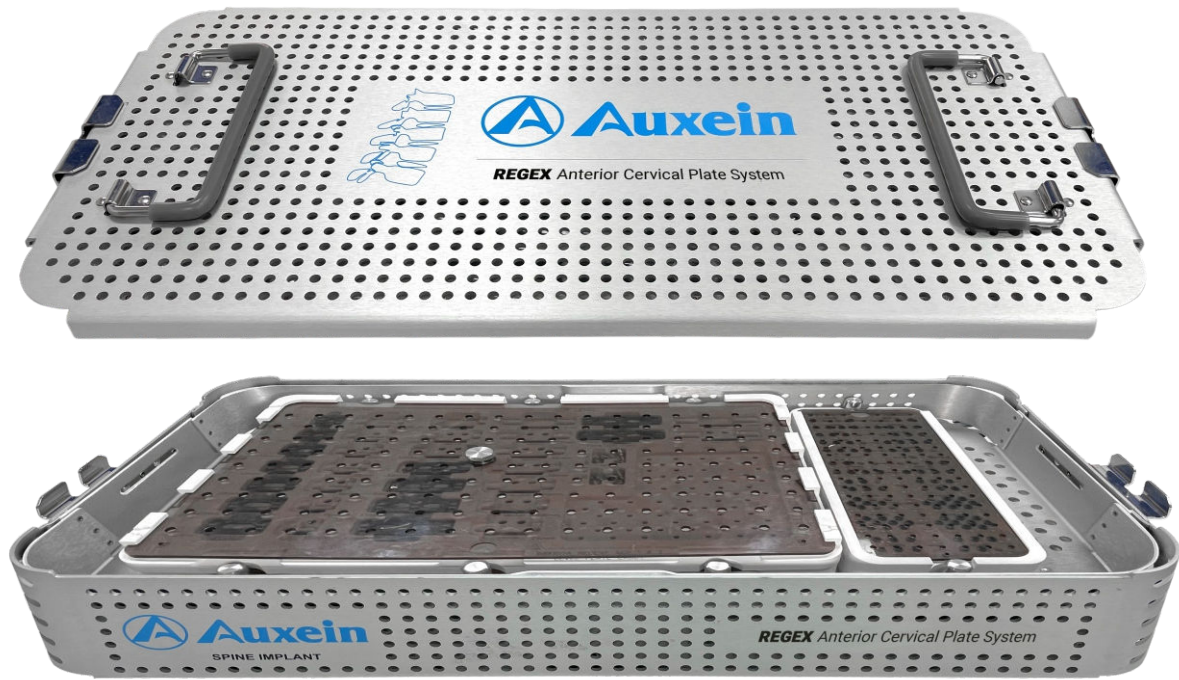
Code	Length	Qty.
4-090-12TI	12mm	4
4-090-14TI	14mm	4
4-090-16TI	16mm	4
4-090-18TI	18mm	4
4-090-20TI	20mm	4

**4.5mm REGEX-Bone Screws,  
Self-Drilling, Fixed Angled**

Code	Length	Qty.
4-040-12TI	12mm	4
4-040-14TI	14mm	4
4-040-16TI	16mm	4
4-040-18TI	18mm	4
4-040-20TI	20mm	4



**4-041-04 REGEX Anterior Cervical Plate System  
Implant case with Lid**



**7-025-01**

REGEX- Awl

**7-025-02**

REGEX- Variable Awl Sleeve

**7-025-03**

REGEX- Fixed Awl Sleeve

**7-025-04**

REGEX- Quick Release Handle

**7-025-05**

REGEX- Screwdriver for Screw Removal

**7-025-06**

REGEX- Screwdriver for Screw Insertion

**7-025-07**

REGEX- Plate Holder

**7-025-08**

REGEX- Double Barrel Variable Drill Guide



**7-025-09**

REGEX- Single Barrel Fixed Drill Guide



**7-025-10**

REGEX- Single Barrel Variable Drill Guide



**7-025-11**

REGEX- Tap



**7-025-12**

REGEX- 10.0mm Drill



**7-025-13**

REGEX- 12.0mm Drill



**7-025-14**

REGEX- 14.0mm Drill



**7-025-15**

REGEX- 16.0mm Drill



**7-025-16**

REGEX- 18.0mm Drill



7-025-17 REGEX- Universal Drill Guide



7-025-18 REGEX- Plate Bender



7-025-19 REGEX- Revision Screwdriver



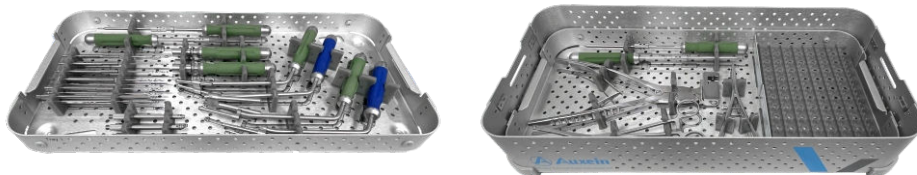
7-025-20 REGEX- Caliper



7-025-21 REGEX- Fixation Pin



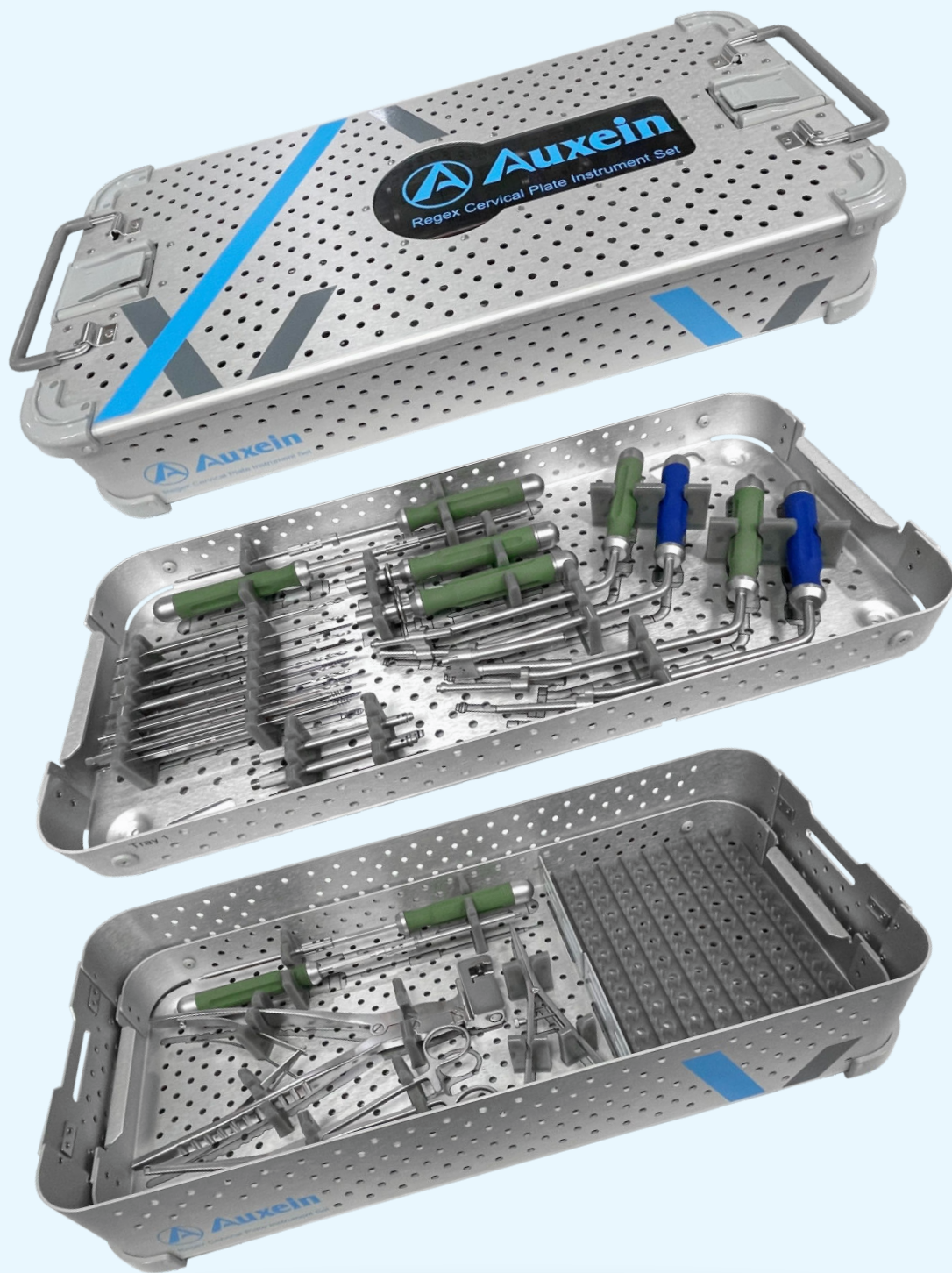
7-025-22 Instrument Tray for REGEX-Anterior Cervical Plate Instrument Set



7-025-23 Container with Tray for REGEX- System



**7-025 REGEX-Anterior Cervical Plate Instrument Set**



**7-025 REGEX-Anterior Cervical Plate Instrument Set**

Code	Set Consisting of	Qty.
<b>7-025-01</b>	REGEX- Awl	1
<b>7-025-02</b>	REGEX- Variable Awl Sleeve	1
<b>7-025-03</b>	REGEX- Fixed Awl Sleeve	1
<b>7-025-04</b>	REGEX- Quick Release Handle	2
<b>7-025-05</b>	REGEX- Screwdriver for Screw Removal	1
<b>7-025-06</b>	REGEX- Screwdriver for Screw Insertion	1
<b>7-025-07</b>	REGEX- Plate Holder	1
<b>7-025-08</b>	REGEX- Double Barrel Variable Drill Guide	1
<b>7-025-09</b>	REGEX- Single Barrel Fixed Drill Guide	1
<b>7-025-10</b>	REGEX- Single Barrel Variable Drill Guide	1
<b>7-025-11</b>	REGEX- Tap	2
<b>7-025-12</b>	REGEX- 10.0mm Drill	2
<b>7-025-13</b>	REGEX- 12.0mm Drill	2
<b>7-025-14</b>	REGEX- 14.0mm Drill	1
<b>7-025-15</b>	REGEX- 16.0mm Drill	1
<b>7-025-16</b>	REGEX- 18.0mm Drill	1
<b>7-025-17</b>	REGEX- Universal Drill Guide	1
<b>7-025-18</b>	REGEX- Plate Bender	1
<b>7-025-19</b>	REGEX- Revision Screwdriver	1
<b>7-025-20</b>	REGEX- Caliper	1
<b>7-025-21</b>	REGEX- Fixation Pin	10
<b>7-025-22</b>	Instrument Tray for REGEX-Anterior Cervical Plate Instrument Set	2
<b>7-025-23</b>	Container with Tray for REGEX- System	1