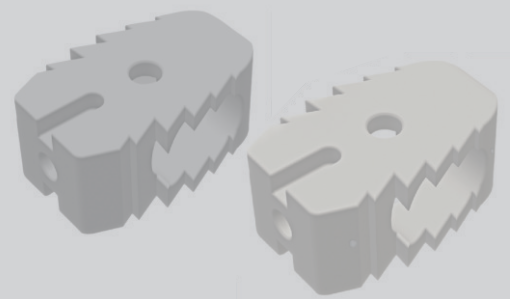
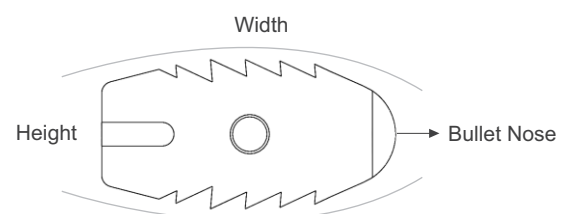
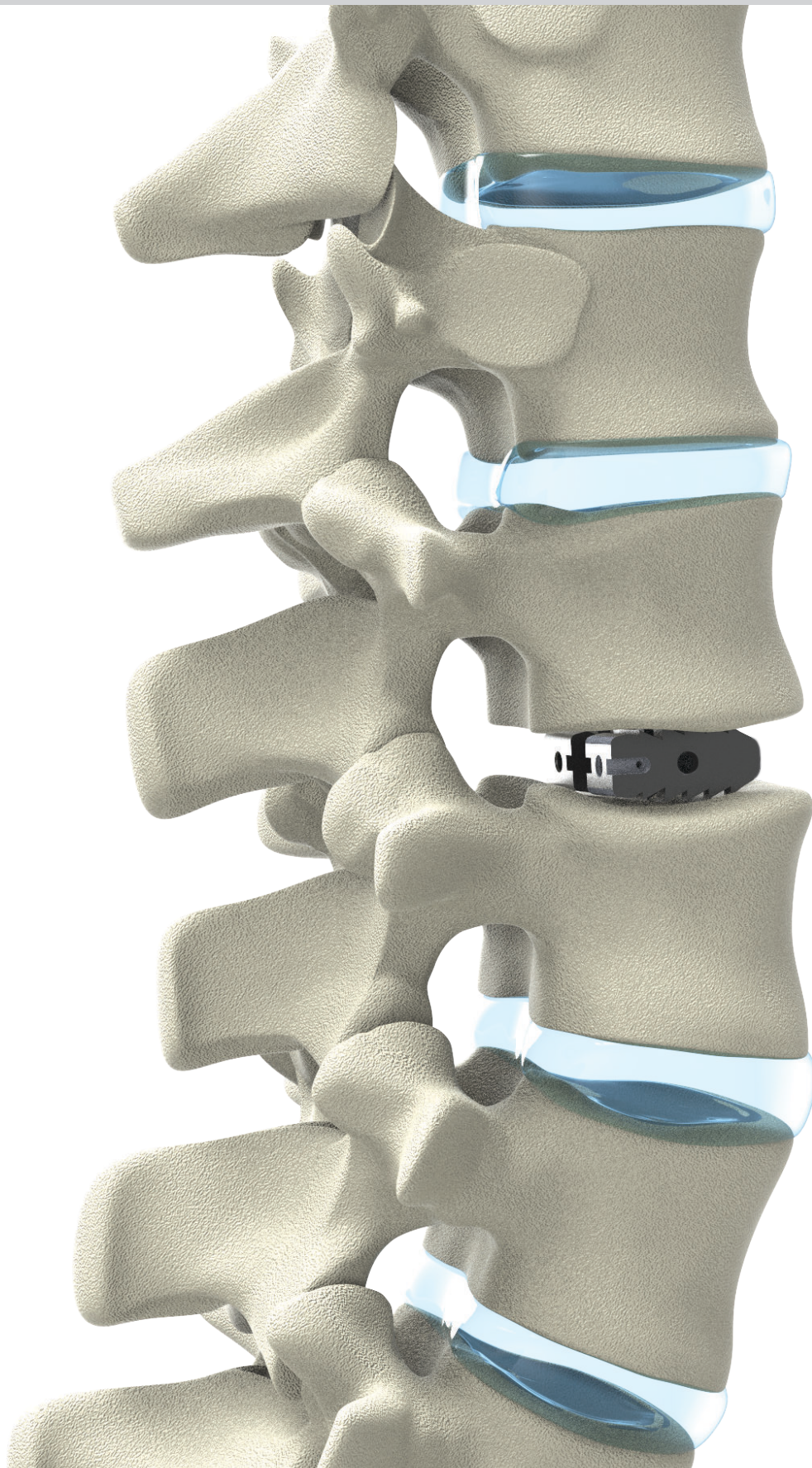


# LUMBAR CAGE (PLIF)

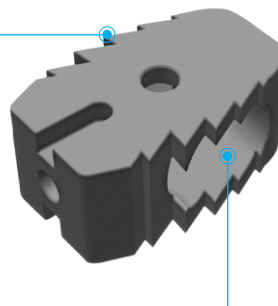


Lumbar Cage (PLIF)



**Lumbar Cage (PLIF)**

**Specially Aligned Teeth**  
teeth on superior and inferior surfaces ensure good primary stability and reduce the risk of cage migration


**TITANIUM**

**Axial Window**  
Accommodates autogenous bone graft or bone graft substitute to allow fusion to occur through the cage

Code	Dia X Length
<b>SP-1665</b>	6mm x 10mm x 20mm
<b>SP-1666</b>	7mm x 10mm x 20mm
<b>SP-910</b>	8mm x 10mm x 20mm
<b>SP-1667</b>	9mm x 10mm x 20mm
<b>SP-911</b>	10mm x 10mm x 20mm
<b>SP-1668</b>	11mm x 10mm x 20mm
<b>SP-912</b>	12mm x 10mm x 20mm
<b>SP-1669</b>	13mm x 10mm x 20mm
<b>SP-913</b>	14mm x 10mm x 20mm
<b>SP-1670</b>	15mm x 10mm x 20mm
<b>SP-914</b>	16mm x 10mm x 20mm
<b>SP-1723</b>	17mm X 10mm X 20mm
<b>SP-1724</b>	18mm x 10mm x 20mm
<b>SP-1725</b>	19mm x 10mm x 20mm
<b>SP-1671</b>	6mm x 10mm x 22mm
<b>SP-1672</b>	7mm x 10mm x 22mm
<b>SP-397</b>	8mm x 10mm x 22mm
<b>SP-1673</b>	9mm x 10mm x 22mm
<b>SP-399</b>	10mm x 10mm x 22mm
<b>SP-1674</b>	11mm x 10mm x 22mm
<b>SP-401</b>	12mm x 10mm x 22mm
<b>SP-1675</b>	13mm x 10mm x 22mm
<b>SP-403</b>	14mm x 10mm x 22mm
<b>SP-1676</b>	15mm x 10mm x 22mm
<b>SP-908</b>	16mm x 10mm x 22mm
<b>SP-1726</b>	17mm x 10mm x 22mm
<b>SP-1727</b>	18mm x 10mm x 22mm
<b>SP-1728</b>	19mm x 10mm x 22mm

Code	Dia X Length
<b>SP-1677</b>	6mm x 10mm x 25mm
<b>SP-1678</b>	7mm x 10mm x 25mm
<b>SP-915</b>	8mm x 10mm x 25mm
<b>SP-1679</b>	9mm x 10mm x 25mm
<b>SP-916</b>	10mm x 10mm x 25mm
<b>SP-1680</b>	11mm x 10mm x 25mm
<b>SP-917</b>	12mm x 10mm x 25mm
<b>SP-1681</b>	13mm x 10mm x 25mm
<b>SP-918</b>	14mm x 10mm x 25mm
<b>SP-1682</b>	15mm x 10mm x 25mm
<b>SP-919</b>	16mm x 10mm x 25mm
<b>SP-1729</b>	17mm x 10mm x 25mm
<b>SP-1730</b>	18mm x 10mm x 25mm
<b>SP-1731</b>	19mm x 10mm x 25mm
<b>SP-1683</b>	6mm x 10mm x 26mm
<b>SP-1684</b>	7mm x 10mm x 26mm
<b>SP-398</b>	8mm x 10mm x 26mm
<b>SP-1685</b>	9mm x 10mm x 26mm
<b>SP-400</b>	10mm x 10mm x 26mm
<b>SP-1686</b>	11mm x 10mm x 26mm
<b>SP-402</b>	12mm x 10mm x 26mm
<b>SP-1687</b>	13mm x 10mm x 26mm
<b>SP-404</b>	14mm x 10mm x 26mm
<b>SP-1688</b>	15mm x 10mm x 26mm
<b>SP-909</b>	16mm x 10mm x 26mm
<b>SP-1732</b>	17mm x 10mm x 26mm
<b>SP-1733</b>	18mm x 10mm x 26mm
<b>SP-1734</b>	19mmx 10mm x 26mm

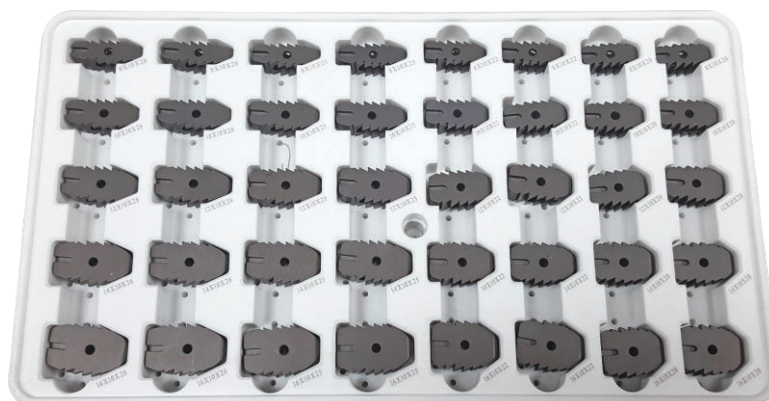
### Lumbar Cage (PLIF)



PEEK OPTIMA

available in: **STERILE | R**

Code	Dia X Length	Code	Dia X Length
<b>SP-1689</b>	6mm x 10mm x 20mm	<b>SP-1701</b>	6mm x 10mm x 25mm
<b>SP-1690</b>	7mm x 10mm x 20mm	<b>SP-1702</b>	7mm x 10mm x 25mm
<b>SP-977</b>	8mm x 10mm x 20mm	<b>SP-982</b>	8mm x 10mm x 25mm
<b>SP-1691</b>	9mm x 10mm x 20mm	<b>SP-1703</b>	9mm x 10mm x 25mm
<b>SP-978</b>	10mm x 10mm x 20mm	<b>SP-983</b>	10mm x 10mm x 25mm
<b>SP-1692</b>	11mm x 10mm x 20mm	<b>SP-1704</b>	11mm x 10mm x 25mm
<b>SP-979</b>	12mm x 10mm x 20mm	<b>SP-984</b>	12mm x 10mm x 25mm
<b>SP-1693</b>	13mm x 10mm x 20mm	<b>SP-1705</b>	13mm x 10mm x 25mm
<b>SP-980</b>	14mm x 10mm x 20mm	<b>SP-985</b>	14mm x 10mm x 25mm
<b>SP-1694</b>	15mm x 10mm x 20mm	<b>SP-1706</b>	15mm x 10mm x 25mm
<b>SP-981</b>	16mm x 10mm x 20mm	<b>SP-986</b>	16mm x 10mm x 25mm
<b>SP-1813</b>	17mm x 10mm x 20mm	<b>SP-1819</b>	17mm x 10mm x 25mm
<b>SP-1814</b>	18mm x 10mm x 20mm	<b>SP-1820</b>	18mm x 10mm x 25mm
<b>SP-1815</b>	19mm x 10mm x 20mm	<b>SP-1821</b>	19mm x 10mm x 25mm
<b>SP-1695</b>	6mm x 10mm x 22mm	<b>SP-1707</b>	6mm x 10mm x 26mm
<b>SP-1696</b>	7mm x 10mm x 22mm	<b>SP-1708</b>	7mm x 10mm x 26mm
<b>SP-409</b>	8mm x 10mm x 22mm	<b>SP-413</b>	8mm x 10mm x 26mm
<b>SP-1697</b>	9mm x 10mm x 22mm	<b>SP-1709</b>	9mm x 10mm x 26mm
<b>SP-410</b>	10mm x 10mm x 22mm	<b>SP-414</b>	10mm x 10mm x 26mm
<b>SP-1698</b>	11mm x 10mm x 22mm	<b>SP-1710</b>	11mm x 10mm x 26mm
<b>SP-411</b>	12mm x 10mm x 22mm	<b>SP-415</b>	12mm x 10mm x 26mm
<b>SP-1699</b>	13mm x 10mm x 22mm	<b>SP-1711</b>	13mm x 10mm x 26mm
<b>SP-412</b>	14mm x 10mm x 22mm,	<b>SP-416</b>	14mm x 10mm x 26mm
<b>SP-1700</b>	15mm x 10mm x 22mm	<b>SP-1712</b>	15mm x 10mm x 26mm
<b>SP-952</b>	16mm x 10mm x 22mm	<b>SP-987</b>	16mm x 10mm x 26mm
<b>SP-1816</b>	17mm x 10mm x 22mm	<b>SP-1822</b>	17mm x 10mm x 26mm
<b>SP-1817</b>	18mm x 10mm x 22mm	<b>SP-1823</b>	18mm x 10mm x 26mm
<b>SP-1818</b>	19mm x 10mm x 22mm	<b>SP-1824</b>	19mm x 10mm x 26mm

**4-007-01 Lumbar Cage (PLIF) Implant Set**


Code	Product Specification (mm)	Qty.
<b>SP-910</b>	Lumbar Cage, 8 x 10 x 20, Titanium	2
<b>SP-397</b>	Lumbar Cage, 8 x 10 x 22, Titanium	2
<b>SP-915</b>	Lumbar Cage, 8 x 10 x 25, Titanium	2
<b>SP-398</b>	Lumbar Cage, 8 x 10 x 26, Titanium	2
<b>SP-911</b>	Lumbar Cage, 10 x 10 x 20, Titanium	2
<b>SP-399</b>	Lumbar Cage, 10 x 10 x 22, Titanium	2
<b>SP-916</b>	Lumbar Cage, 10 x 10 x 25, Titanium	2
<b>SP-400</b>	Lumbar Cage, 10 x 10 x 26, Titanium	2
<b>SP-912</b>	Lumbar Cage, 12 x 10 x 20, Titanium	2
<b>SP-401</b>	Lumbar Cage, 12 x 10 x 22, Titanium	2
<b>SP-917</b>	Lumbar Cage, 12 x 10 x 25, Titanium	2
<b>SP-402</b>	Lumbar Cage, 12 x 10 x 26, Titanium	2
<b>SP-913</b>	Lumbar Cage, 14 x 10 x 20, Titanium	2
<b>SP-403</b>	Lumbar Cage, 14 x 10 x 22, Titanium	2
<b>SP-918</b>	Lumbar Cage, 14 x 10 x 25, Titanium	2
<b>SP-404</b>	Lumbar Cage, 14 x 10 x 26, Titanium	2
<b>SP-914</b>	Lumbar Cage, 16 x 10 x 20, Titanium	2
<b>SP-908</b>	Lumbar Cage, 16 x 10 x 22, Titanium	2
<b>SP-919</b>	Lumbar Cage, 16 x 10 x 25, Titanium	2
<b>SP-909</b>	Lumbar Cage, 16 x 10 x 26, Titanium	2
<b>IMPL-971</b>	Tray with Cover for Lumbar Cage (PLIF) Implant Set	1

**SP-098**      Straight Serrated Cup Curette - Long



**SP-099**      Straight Serrated Cup Curette - Short



**SP-100**      Pull Scraper



**SP-101**      Push Scraper



**SP-102**      Trial, 6mm x 24mm



**SP-103**      Trial, 8mm x 22mm



**SP-104** Trial, 8mm x 26mm



**SP-105** Trial, 10mm x 22mm



**SP-106** Trial, 10mm x 26mm



**SP-107** Trial, 12mm x 22mm



**SP-108** Trial, 12mm x 26mm



**SP-109** Trial, 14mm x 22mm



**SP-110** Trial, 14mm x 26mm



**SP-111** Threaded Inserter for Lumbar Cage



**SP-112** Wrench, Ø3.2mm, for Lumbar Cage



**SP-113** Slap Hammer for Lumbar Cage



**SP-114** Scraper, 7mm



**SP-115** Scraper, 8mm



**SP-116**      Scraper, 9mm**SP-117**      Slap Plate**SP-118**      Round Scraper, 10.5mm x 10mm**SP-119**      Round Scraper, 9.5mm x 8.5mm**SP-120**      Round Scraper, 8.5mm x 7.5mm**SP-121**      Round Scraper, 7.5mm x 6.5mm



**SP-122** Root Retractor - Large



**SP-123** Root Retractor - Small



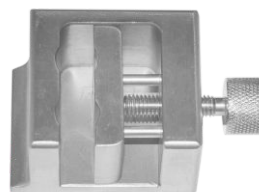
**SP-124** Elevator



**SP-125** Graft Impactor for Lumbar Cage



**SP-126** Implant Support for Lumbar Cage



**SP-127** Bone Plugger for Lumbar Cage



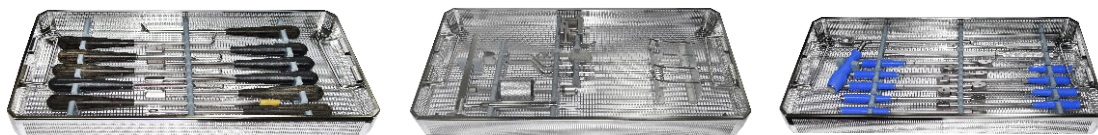
**SP-128**

Bone Impactor



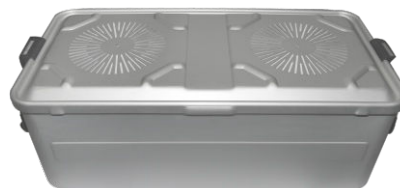
**SP-470**

Mesh Trays for Lumbar Cage (PLIF) Instrument Set

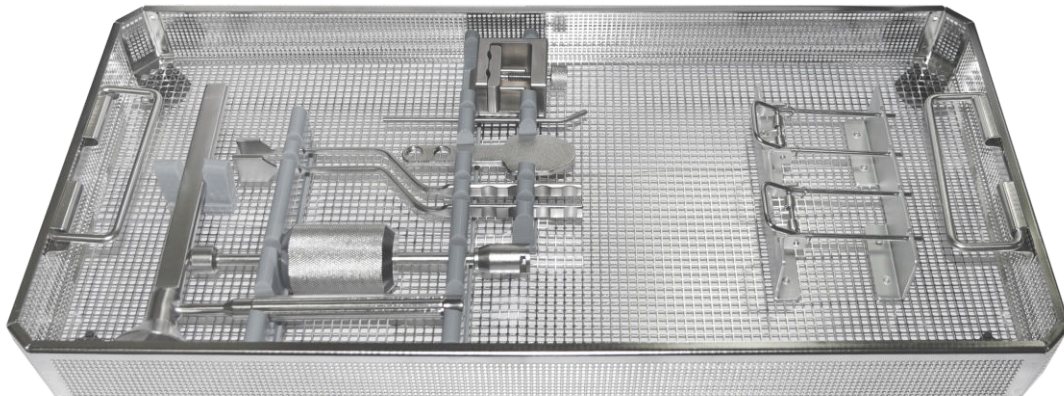
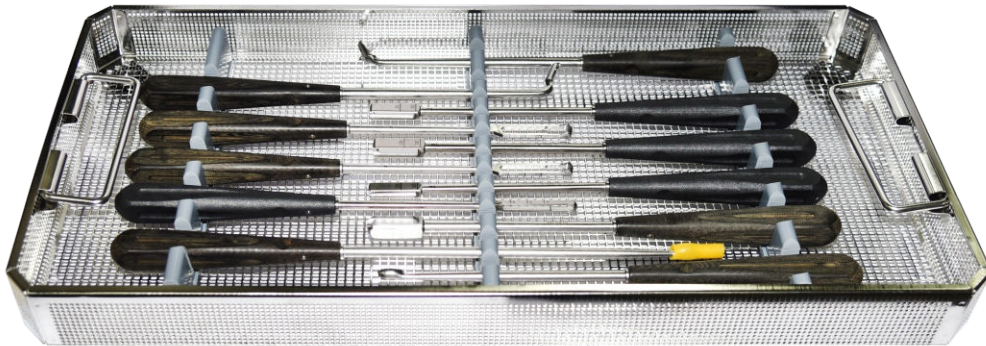
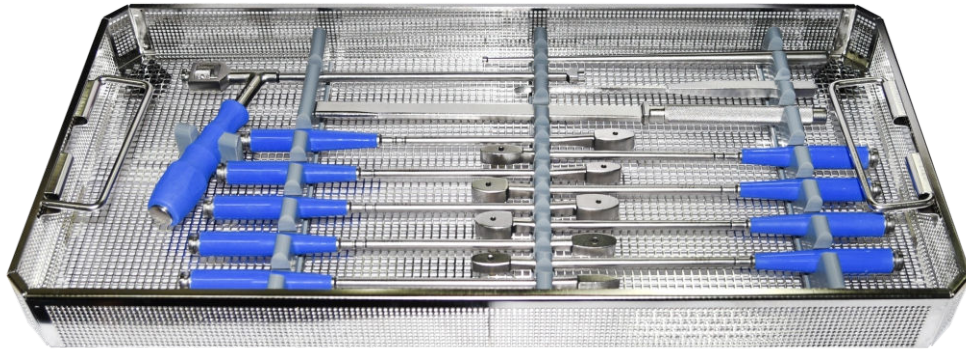


**SP-097**

Sterilization Container for Lumbar Cage (PLIF) Instrument Set



**SP-096 Lumbar Cage (PLIF) Instrument Set**



**SP-096 Lumbar Cage Instrument Set**

Code	Product Specification	Qty.
<b>SP-098</b>	Straight Serrated Cup Curette - Long	1
<b>SP-099</b>	Straight Serrated Cup Curette - Short	1
<b>SP-100</b>	Pull Scraper	1
<b>SP-101</b>	Push Scraper	1
<b>SP-102</b>	Trial, 6mm x 24mm	1
<b>SP-103</b>	Trial, 8mm x 22mm	1
<b>SP-104</b>	Trial, 8mm x 26mm	1
<b>SP-105</b>	Trial, 10mm x 22mm	1
<b>SP-106</b>	Trial, 10mm x 26mm	1
<b>SP-107</b>	Trial, 12mm x 22mm	1
<b>SP-108</b>	Trial, 12mm x 26mm	1
<b>SP-109</b>	Trial, 14mm x 22mm	1
<b>SP-110</b>	Trial, 14mm x 26mm	1
<b>SP-111</b>	Threaded Inserter for Lumbar Cage	1
<b>SP-112</b>	Wrench, Ø3.2mm, for Lumbar Cage	1
<b>SP-113</b>	Slap Hammer for Lumbar Cage	1
<b>SP-114</b>	Scraper, 7mm	1
<b>SP-115</b>	Scraper, 8mm	1
<b>SP-116</b>	Scraper, 9mm	1
<b>SP-117</b>	Slap Plate	1
<b>SP-118</b>	Round Scraper, 10.5mm x 10mm	1
<b>SP-119</b>	Round Scraper, 9.5mm x 8.5mm	1
<b>SP-120</b>	Round Scraper, 8.5mm x 7.5mm	1
<b>SP-121</b>	Round Scraper, 7.5mm x 6.5mm	1
<b>SP-122</b>	Root Retractor - Large	1
<b>SP-123</b>	Root Retractor - Small	1
<b>SP-124</b>	Elevator	1
<b>SP-125</b>	Graft Impactor for Lumbar Cage	1
<b>SP-126</b>	Implant Support for Lumbar Cage	1
<b>SP-127</b>	Bone Plugger for Lumbar Cage	1
<b>SP-128</b>	Bone Impactor	1
<b>SP-470</b>	Mesh Trays for Lumbar Cage (PLIF) Instrument Set	3
<b>SP-097</b>	Sterilization Container for Lumbar Cage (PLIF) Instrument Set	1