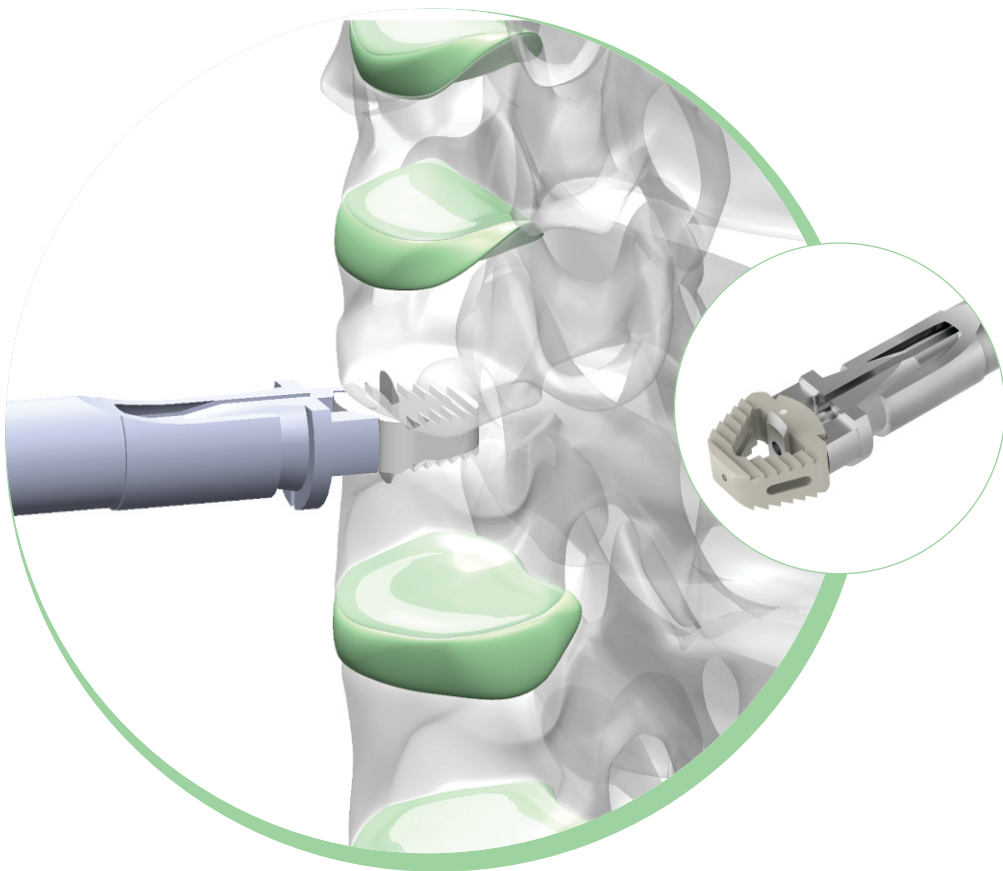


KNIFE Cervical Bladed Cage

KNIFE Cervical Bladed Cage



The Knife-Cervical Bladed Cage is indicated for use in inter body fusion of the Cervical Spine.

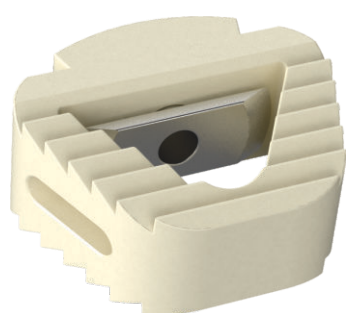
SP-1909 KNIFE- Cervical Bladed Cage Holder



KNIFE - Cervical Bladed Cage

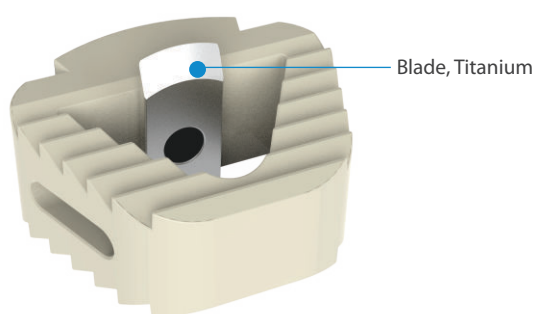
- It provides primary and secondary stability locking mechanism without the need of anterior plate fixation.
- The blade penetrates into the vertebral column and prevents primary and/or secondary micro movements, advancing the fusion of the graft with vertebra.
- Helps in reducing the duration of wearing the Cervical collar.

Fig (A)



Normal Position

Fig (B)

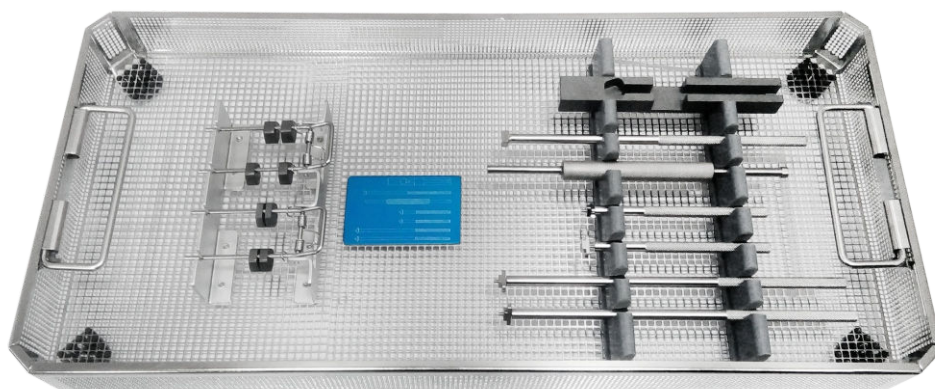


Locking Position

available in: **STERILE R**

KNIFE-Cervical Bladed Cage (PEEK)

Code	Product Specification (mm)
SP-1900	4 x 16 x 13
SP-1901	5 x 16 x 13
SP-1902	6 x 16 x 13
SP-1903	7 x 16 x 13
SP-1904	8 x 16 x 13
SP-1905	9 x 16 x 13
SP-1906	10 x 16 x 13
SP-1907	11 x 16 x 13
SP-1908	12 x 16 x 13

SP-040 Cervical cage (ACDF) Instrument Set


Code	Set Consisting of	Qty.
7-052-01	Trial, 4mm for Cervical Cage	2
SP-042	Trial, 5mm for Cervical Cage	2
SP-043	Trial, 6mm for Cervical Cage	2
SP-044	Trial, 7mm for Cervical Cage	2
SP-045	Trial, 8mm for Cervical Cage	2
SP-046	Implant Inserter - Long	2
SP-047	Implant Inserter - Short	2
SP-048	Curve Tamp	1
SP-049	Implant Support for Cervical Cage	1
SP-050	Graft Impactor for Cervical Cage	1
SP-469	Mesh Tray for Cervical cage (ACDF) Instrument Set	1