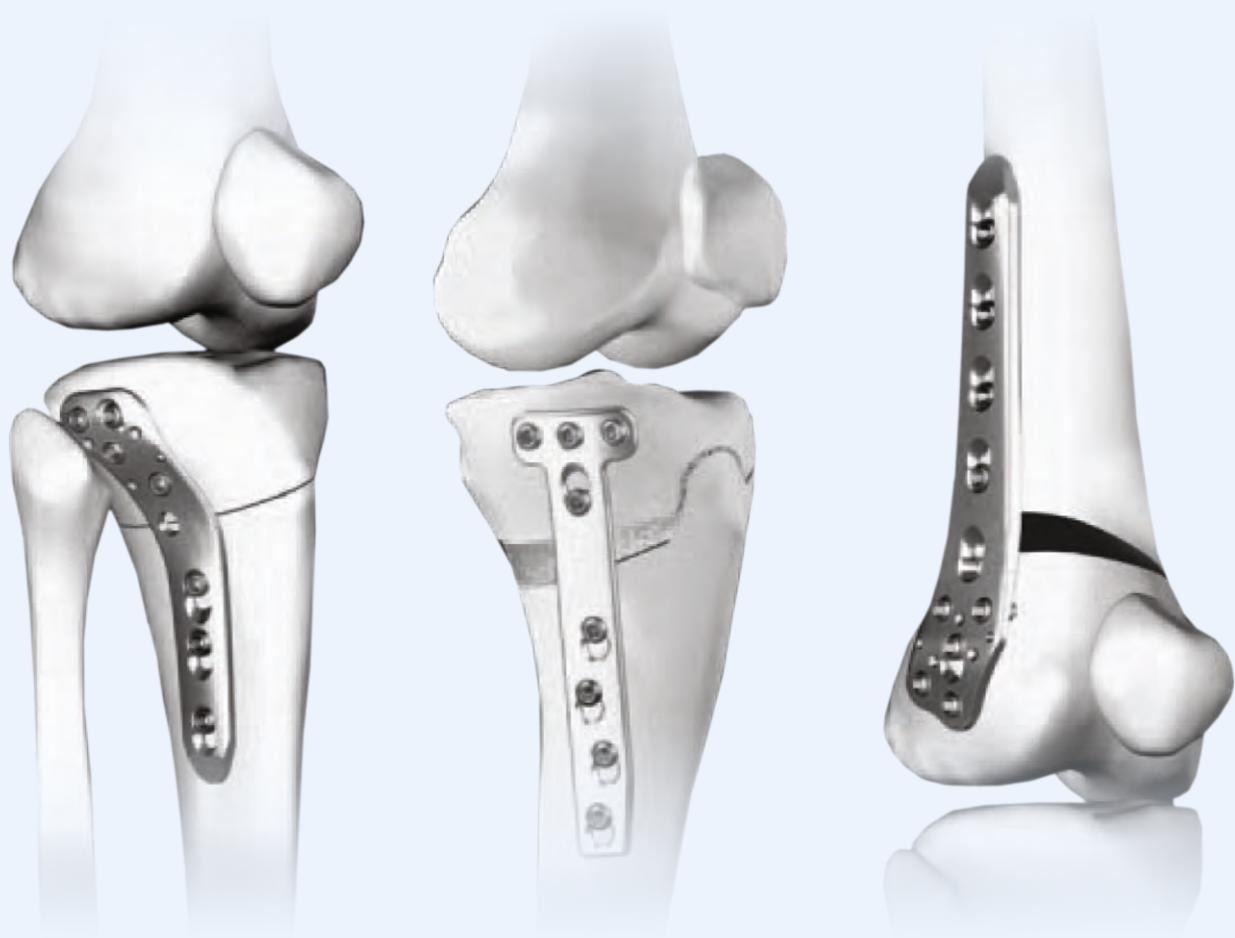


5.0mm

Wise-Lock Large Fragment

OSTEOTOMY SYSTEM



Indications

Osteotomy

Open-wedge and closed-wedge osteotomies of the:

- Medial high tibia
- Lateral high tibia
- Lateral distal femur

Osteotomy Medial Distal Femur

Indications

- Unicompartamental lateral gonarthrosis with valgus malalignment of the distal femur
- Idiopathic or posttraumatic valgus deformity of the distal femur
- Patient age below 65 – 70 yrs.
- Physically active patients
- Pre-operative range of motion of the knee joint of at least E/F 0/10/90°

Contraindications

- Arthritis and third to fourth degree cartilage degeneration in the medial compartment
- Complete medial meniscectomy
- Severe obesity
- Insufficient soft tissue conditions
- Nicotine abuse

4.5/5.0mm Wise-Lock Osteotomy Medial High Tibia Plate



Holes	Stainless Steel	Titanium
5	575.005	TI-575.005

4.5/5.0mm Wise-Lock Osteotomy Lateral High Tibia Plate

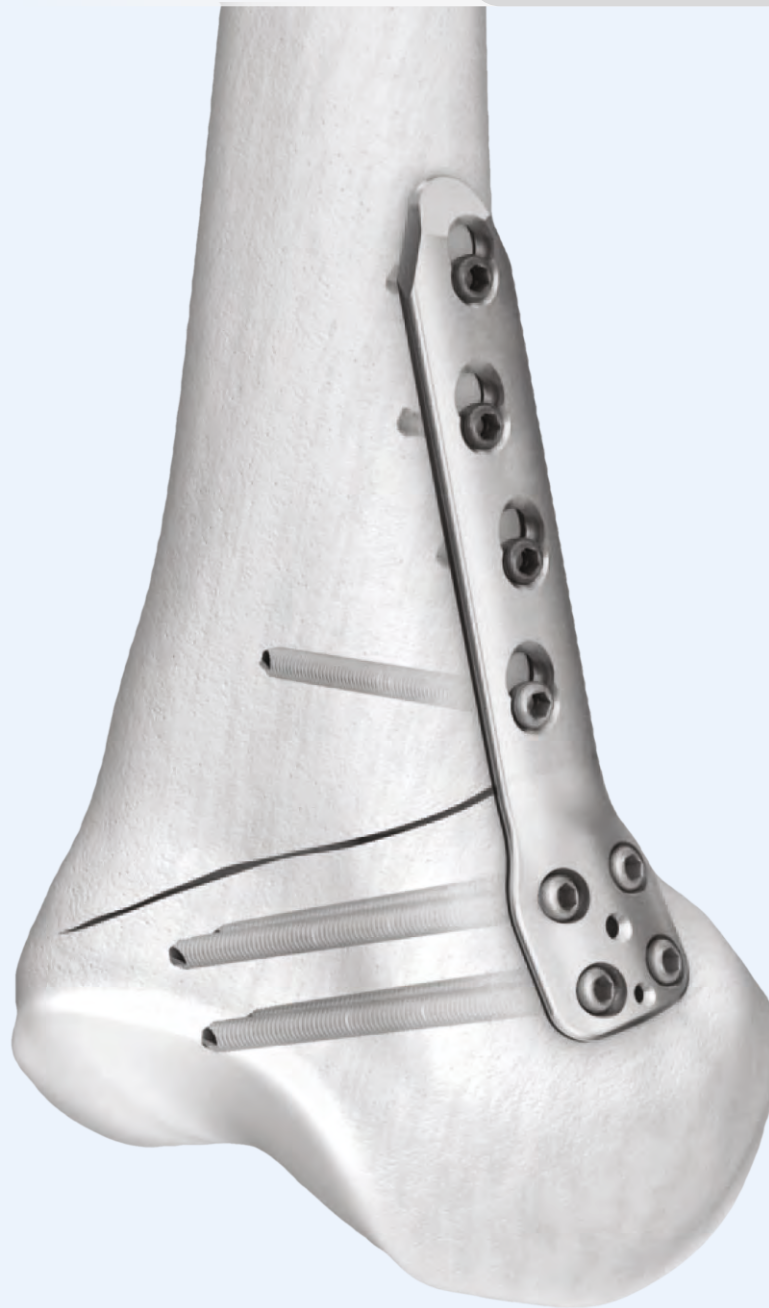


	Left Direction		Right Direction	
Holes	Stainless Steel	Titanium	Stainless Steel	Titanium
3	576.003L	TI-576.003L	576.003R	TI-576.003R

4.5/5.0mm Wise-Lock Osteotomy Lateral Distal Femur Plate



	Left Direction		Right Direction	
Holes	Stainless Steel	Titanium	Stainless Steel	Titanium
5	577.005L	TI-577.005L	577.005R	TI-577.005R

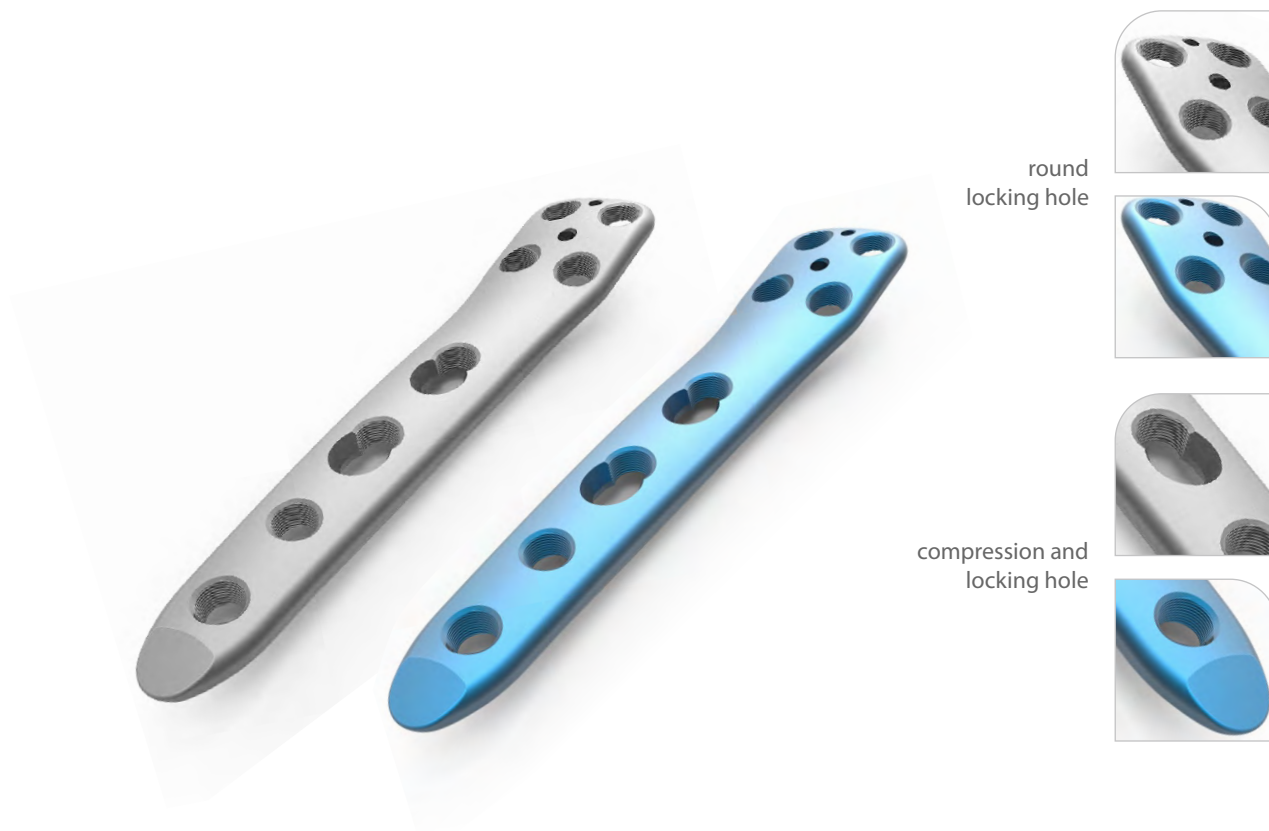
**Indications**

- Unicompartmental lateral gonarthrosis with valgusmalalignment of the distal femur
- Idiopathic or posttraumatic valgus deformity of the distal femur
- Patient age below 65–70 yrs.
- Physically active patients
- Pre-operative range of motion of the knee joint of at least E/F 0/10/90°

Contraindications

- Arthritis and third to fourth degree cartilage degeneration in the medial compartment
- Complete medial meniscectomy
- Severe obesity
- Insufficient soft tissue conditions
- Nicotine abuse

4.5/5.0mm Wise-Lock Osteotomy Medial Distal Femur Plate



Holes	Left Direction		Right Direction	
	Stainless Steel	Titanium	Stainless Steel	Titanium
4	578.004L	TI-578.004L	578.004R	TI-578.004R

4.5mm Cortical Screw, Self-Tapping, (Hex Head)

Length (mm)	Stainless Steel	Titanium
20	105.220	TI-105.220
22	105.222	TI-105.222
24	105.224	TI-105.224
26	105.226	TI-105.226
28	105.228	TI-105.228
30	105.230	TI-105.230
32	105.232	TI-105.232
34	105.234	TI-105.234
36	105.236	TI-105.236
38	105.238	TI-105.238
40	105.240	TI-105.240
42	105.242	TI-105.242
44	105.244	TI-105.244
46	105.246	TI-105.246
48	105.248	TI-105.248
50	105.250	TI-105.250
52	105.252	TI-105.252
54	105.254	TI-105.254
* 55	105.255	TI-105.255
56	105.256	TI-105.256
58	105.258	TI-105.258
60	105.260	TI-105.260
65	105.265	TI-105.265
70	105.270	TI-105.270
80	105.280	TI-105.280
* 85	105.285	TI-105.285
* 90	105.290	TI-105.290

* Sizes not available in Screw Caddy



5.0mm Wise-Lock Screw, Self-Tapping, (Hex Head)

Length (mm)	Stainless Steel	Titanium
12	119.012	TI-119.012
14	119.014	TI-119.014
16	119.016	TI-119.016
18	119.018	TI-119.018
20	119.020	TI-119.020
22	119.022	TI-119.022
24	119.024	TI-119.024
26	119.026	TI-119.026
28	119.028	TI-119.028
30	119.030	TI-119.030
32	119.032	TI-119.032
34	119.034	TI-119.034
36	119.036	TI-119.036
38	119.038	TI-119.038
40	119.040	TI-119.040
42	119.042	TI-119.042
44	119.044	TI-119.044
46	119.046	TI-119.046
48	119.048	TI-119.048
50	119.050	TI-119.050
52	119.052	TI-119.052
54	119.054	TI-119.054
56	119.056	TI-119.056
58	119.058	TI-119.058
60	119.060	TI-119.060
65	119.065	TI-119.065
70	119.070	TI-119.070
75	119.075	TI-119.075
80	119.080	TI-119.080
85	119.085	TI-119.085
90	119.090	TI-119.090



7-060-01

Osteotomy Chisel, 10mm



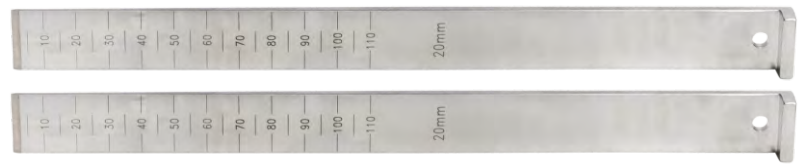
7-060-02

Osteotomy Chisel, 15mm



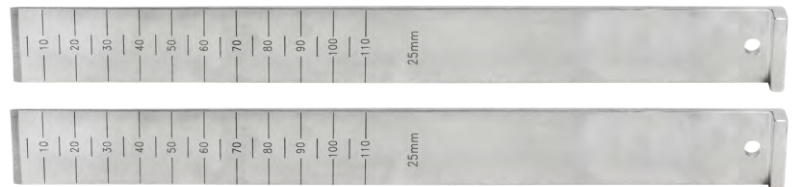
7-060-03

Osteotomy Chisel, 20mm



7-060-04

Osteotomy Chisel, 25mm



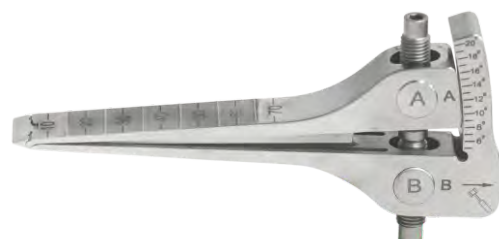
7-060-05

Osteotomy Gap Measuring Device, 5-16mm



7-060-06

Osteotomy Bone Spreader, 0°-20°



7-060-07

Osteotomy Distractor

**7-060-08**

Osteotomy Stand for Alignment Rod, Large

**7-060-09**

Osteotomy Stand for Alignment Rod, Small

**7-060-10**

Osteotomy Alignment Rod, Ø6mm x Length 520mm

**7-060-11**

Osteotomy Alignment Rod, Ø6mm x Length 395mm

**7-060-12**

Torque Handle with Jacob Chuck, 4.0Nm



7-060-13

Guide Wire with Threaded Tip, Ø2.5mm x Thread Length 16mm x Length 235mm

**7-060-24**

Threaded Drill Sleeve for Drill Bit Ø4.3mm, for Wise-Lock Osteotomy

**7-060-14**

Drill Bit with Plain Shank/Jacob Chuck End, Ø3.2mm x Length 147mm, for Wise-Lock Osteotomy

**7-060-15**

Drill Bit with Plain Shank/Jacob Chuck End, Ø4.5mm x Length 150mm, for Wise-Lock Osteotomy

**7-060-16**

Drill Bit with Plain Shank/Jacob Chuck End, Ø4.3mm x Length 222mm, for Wise-Lock Osteotomy

**7-060-17**

Osteotomy Screwdriver with Silicon Handle, Hex 3.5mm



7-060-18 Osteotomy Screwdriver Shaft with Jacob Chuck End, Hex3.5mm



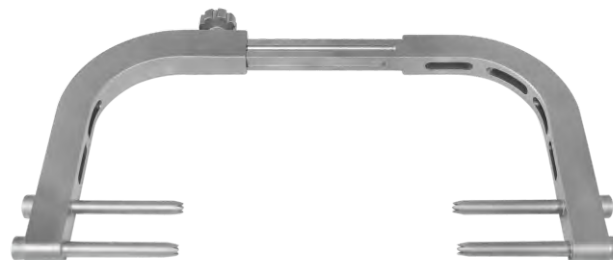
7-060-19 Osteotomy Double Drill Guide Ø3.2/4.5mm



7-060-20 Osteotomy Depth Gauge measuring upto 100mm



7-060-21 Osteotomy Wire Guide



7-060-22 Instrument Trays for 5.0mm Wise-Lock Osteotomy Instrument Set



7-060-23 Container for 5.0mm Wise-Lock Osteotomy Instrument Set



7-060 5.0mm Wise-Lock Osteotomy Instrument Set



7-060 5.0mm Wise-Lock Osteotomy Instrument Set

Item Code	Item Name	Unit
7-060-01	Osteotomy Chisel, 10mm	2
7-060-02	Osteotomy Chisel, 15mm	2
7-060-03	Osteotomy Chisel, 20mm	2
7-060-04	Osteotomy Chisel, 25mm	2
7-060-05	Osteotomy Gap Measuring Device, 5-16mm	2
7-060-06	Osteotomy Bone Spreader, 0°-20°	1
7-060-07	Osteotomy Distractor	1
7-060-08	Osteotomy Stand for Alignment Rod, Large	1
7-060-09	Osteotomy Stand for Alignment Rod, Small	1
7-060-10	Osteotomy Alignment Rod, Ø6mm x Length 520mm	1
7-060-11	Osteotomy Alignment Rod, Ø6mm x Length 395mm	1
7-060-12	Torque Handle with Jacob Chuck, 4.0Nm	1
7-060-13	Guide Wire with Threaded Tip, Ø2.5mm x Thread Length 16mm x Length 235mm	2
7-060-24	Threaded Drill Sleeve for Drill Bit Ø4.3mm, for Wise-Lock Osteotomy	2
7-060-14	Drill Bit with Plain Shank/Jacob Chuck End, Ø3.2mm x Length 147mm, for Wise-Lock Osteotomy	1
7-060-15	Drill Bit with Plain Shank/Jacob Chuck End, Ø4.5mm x Length 150mm, for Wise-Lock Osteotomy	2
7-060-16	Drill Bit with Plain Shank/Jacob Chuck End, Ø4.3mm x Length 222mm, for Wise-Lock Osteotomy	2
7-060-17	Osteotomy Screwdriver with Silicon Handle, Hex 3.5mm	1
7-060-18	Osteotomy Screwdriver Shaft with Jacob Chuck End, Hex3.5mm	2
7-060-19	Osteotomy Double Drill Guide Ø3.2/4.5mm	1
7-060-20	Osteotomy Depth Gauge measuring upto 100mm	1
7-060-21	Osteotomy Wire Guide	1
7-060-22	Instrument Trays for 5.0mm Wise-Lock Osteotomy Instrument Set	2
7-060-23	Container for 5.0mm Wise-Lock Osteotomy Instrument Set	1