

## 2.7mm WISE-LOCK MODULAR HAND & FOOT SYSTEM





# about us

Auxein Medical is an integrated, research based, orthopaedic Implants & Instruments manufacturing company, producing a wide range of quality, affordable generic implants, trusted by healthcare professionals and patients across geographies. It is the Company's constant endeavor to provide a wide basket of generic and innovator products that exceed the highest expectations of our customers in term of quality and safety. The company has world-class manufacturing unit established in India and serves customers in over 60 countries worldwide.

## **Our Achievements**

- US FDA 510K APPROVED •**  
*(Arthroscopy, Spine, Nailing, Locking Plates & Screws)*
- EC Certificate - Class IIa & IIb •
- ISO 13485:2016 •
- ISO 9001:2015 •
- India FDA Approved •
- India MDR 2017 •

# **Orthopaedic Implants**

**2.7mm Wise-Lock Plate, Straight**

Code	Holes
<b>TI-505.404</b>	4
<b>TI-505.405</b>	5
<b>TI-505.406</b>	6
<b>TI-505.407</b>	7
<b>TI-505.408</b>	8
<b>TI-505.410</b>	10


**2.7mm Wise-Lock Condylar Plate**

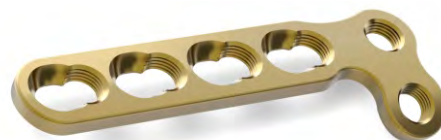
Code	Holes
<b>TI-559.404</b>	Shaft 4, Head 2
<b>TI-559.405</b>	Shaft 5, Head 2
<b>TI-559.406</b>	Shaft 6, Head 2
<b>TI-559.407</b>	Shaft 7, Head 2


**2.7mm Wise-Lock T-Plate**

Code	Holes
<b>TI-556.403</b>	Shaft 3, Head 2
<b>TI-556.404</b>	Shaft 4, Head 2


**2.7mm Wise-Lock L-Plate**

Code	Holes	Type
<b>TI-813.403L</b>	Shaft 3, Head 2	Left
<b>TI-813.403R</b>	Shaft 3, Head 2	Right
<b>TI-813.404L</b>	Shaft 4, Head 2	Left
<b>TI-813.404R</b>	Shaft 4, Head 2	Right



**2.7mm Wise-Lock L-Plate, Oblique**

Code	Holes	Type
<b>TI-1133.03L</b>	Shaft 3, Head 2	Left
<b>TI-1133.03R</b>	Shaft 3, Head 2	Right
<b>TI-1133.04L</b>	Shaft 4, Head 2	Left
<b>TI-1133.04R</b>	Shaft 4, Head 2	Right


**2.7mm Wise-Lock Mini Condylar Plate**

Code	Holes	Type
<b>TI-516.307L</b>	7	Left
<b>TI-516.307R</b>	7	Right


**2.7mm Wise-Lock Straight Plate**

Code	Holes
<b>TI-1134.02</b>	2


**2.4/2.7mm Wise-Lock X-Plate**

Code	Holes	Length
<b>TI-812.301</b>	4	22x14mm
<b>TI-812.302</b>	4	24x18mm
<b>TI-812.303</b>	4	30x20mm
<b>TI-812.304</b>	4	36x20mm



**2.7mm Cortical Screw, Self-Tapping,  
(Star Head)**


Code	Length
TI-1242.06	6
TI-1242.08	8
TI-1242.10	10
TI-1242.12	12
TI-1242.14	14
TI-1242.16	16
TI-1242.18	18
TI-1242.20	20
TI-1242.22	22
TI-1242.24	24
TI-1242.26	26
TI-1242.28	28
TI-1242.30	30
TI-1242.32	32
TI-1242.34	34
TI-1242.36	36
TI-1242.38	38
TI-1242.40	40
TI-1242.42	42
TI-1242.44	44
TI-1242.46	46
TI-1242.48	48
TI-1242.50	50

**2.7mm Wise-Lock Screw, Self-Tapping,  
(Star Head)**


Code	Length
TI-1241.06	6mm
TI-1241.07	7mm
TI-1241.08	8mm
TI-1241.09	9mm
TI-1241.10	10mm
TI-1241.12	12mm
TI-1241.14	14mm
TI-1241.16	16mm
TI-1241.18	18mm
TI-1241.20	20mm
TI-1241.22	22mm
TI-1241.24	24mm
TI-1241.26	26mm
TI-1241.28	28mm
TI-1241.30	30mm
TI-1241.32	32mm
TI-1241.34	34mm
TI-1241.36	36mm
TI-1241.38	38mm
TI-1241.40	40mm
TI-1241.42	42mm
TI-1241.44	44mm
TI-1241.46	46mm
TI-1241.48	48mm
TI-1241.50	50mm
TI-1241.52	52mm
TI-1241.54	54mm
TI-1241.56	56mm
TI-1241.58	58mm
TI-1241.60	60mm

**1137-07** Screwdriver Shaft, T8 For 2.4mm/2.7mm Screws



**1137-03** Bending Pin With Thread For 2.4mm/2.7mm Wise-Lock Plates



**1137-09** Holding Sleeve For 2.4/2.7mm Wise-Lock Screws



**1136-06** Countersink For 2.0/2.4/2.7mm Screws



**1138-01** Self-Centering Double Drill Guide  $\varnothing 2.7/2.0\text{mm}$



**1138-02** Wise-Lock Drill Sleeve 2.7mm For Drill Bits  $\varnothing 2.0\text{mm}$





**1138-04**

Drill Bit Quick Coupling Ø2.0mm x Length 110mm, 2-Flute

**1138-05**

Drill Bit Quick Coupling Ø2.7mm x Length 102mm, 2-Flute

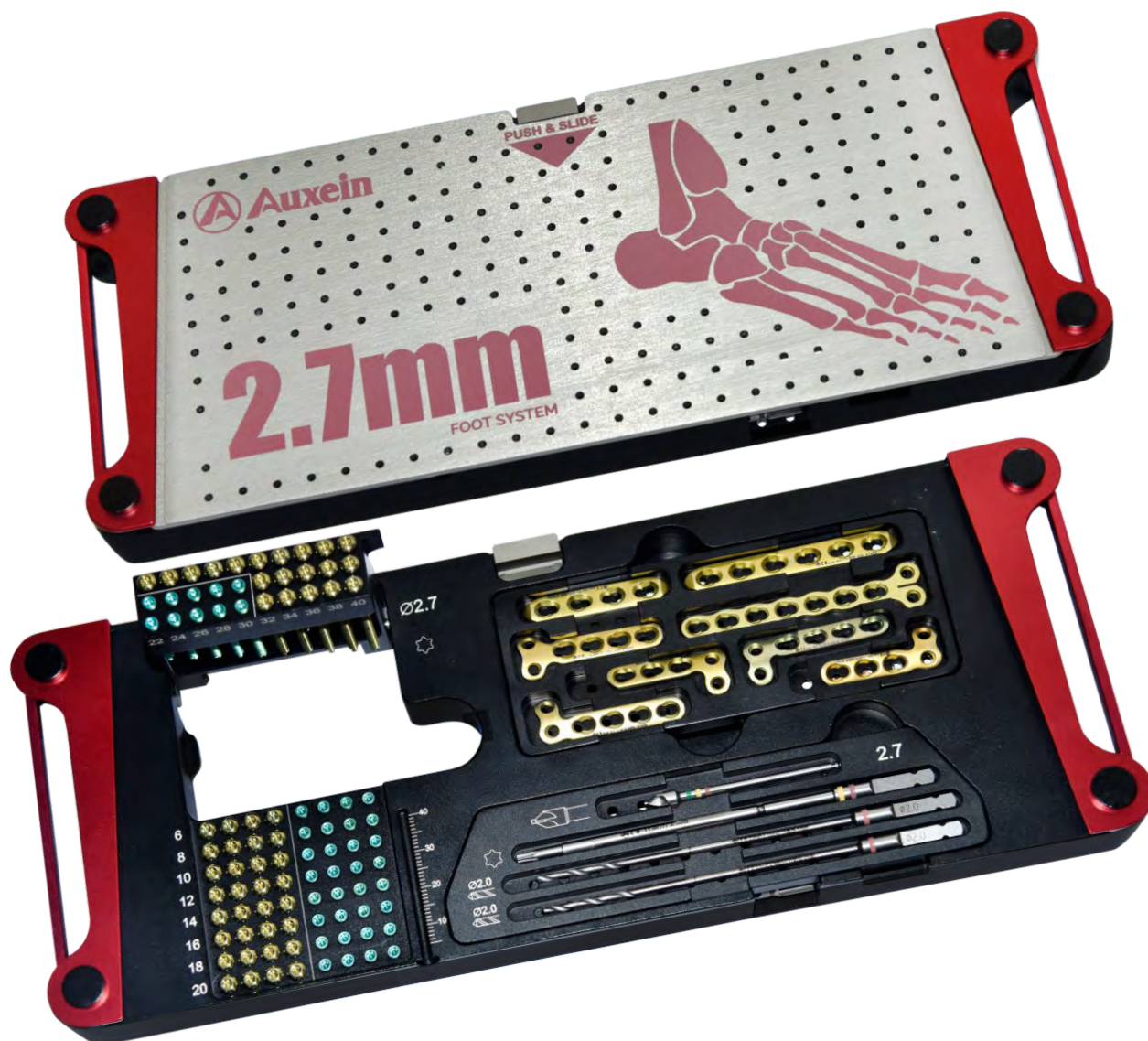
**1138-41**

Holding Sleeve For 2.7mm Cortical Screws

**1138-11**

Container with Tray and Lid For 2.7mm Implant &amp; Instrument Set



**1138-11** Container with Tray and Lid For 2.7mm Implant & Instrument Set

**Instruments For 2.7mm Wise-lock Modular Foot System**

Code	Items	Qty
1137-07	Screwdriver Shaft, T8 For 2.4mm/2.7mm Screws	1
1137-03	Bending Pin With Thread For 2.4mm/2.7mm Wise-Lock Plates	2
1137-09	Holding Sleeve For 2.4/2.7mm Wise-Lock Screws	1
1136-06	Countersink For 2.0/2.4/2.7mm Screws	1
1138-01	Self-Centering Double Drill Guide Ø2.7/2.0mm	1
1138-02	Wise-Lock Drill Sleeve 2.7mm For Drill Bits Ø2.0mm	2
1138-04	Drill Bit Quick Coupling Ø2.0mm x Length 110mm, 2-Flute	2
1138-05	Drill Bit Quick Coupling Ø2.7mm x Length 102mm, 2-Flute	2
1138-41	Holding Sleeve For 2.7mm Cortical Screws	1
1138-11	Container with Tray and Lid For 2.7mm Implant & Instrument Set	1

**1138-11 Container with Tray and Lid For 2.7mm Implant & Instrument Set**

Instruments For 2.7mm Wise-lock Modular Foot System			
	Code	Items	Qty
Plates	<b>TI-505.404</b>	2.7mm Wise-Lock Plate, Straight, 4 Holes	1
	<b>TI-505.406</b>	2.7mm Wise-Lock Plate, Straight, 6 Holes	1
	<b>TI-559.407</b>	2.7mm Wise-Lock Condylar Plate, (2 Head Holes), 7 Holes	1
	<b>TI-556.404</b>	2.7mm Wise-Lock T-Plate, (2 Head Holes), 4 Holes	1
	<b>TI-813.403L</b>	2.7mm Wise-Lock L-Plate, (2 Head Holes), 3 Holes - Left	1
	<b>TI-813.404L</b>	2.7mm Wise-Lock L-Plate, (2 Head Holes), 4 Holes - Left	1
	<b>TI-813.403R</b>	2.7mm Wise-Lock L-Plate, (2 Head Holes), 3 Holes - Right	1
	<b>TI-813.404R</b>	2.7mm Wise-Lock L-Plate, (2 Head Holes), 4 Holes - Right	1
Screws	<b>TI-1242.06</b>	2.7mm Cortical Screws, Self-Tapping, (Star Head), Length 6mm, Titanium	4
	<b>TI-1242.08</b>	2.7mm Cortical Screws, Self-Tapping, (Star Head), Length 8mm, Titanium	4
	<b>TI-1242.10</b>	2.7mm Cortical Screws, Self-Tapping, (Star Head), Length 10mm, Titanium	4
	<b>TI-1242.12</b>	2.7mm Cortical Screws, Self-Tapping, (Star Head), Length 12mm, Titanium	4
	<b>TI-1242.14</b>	2.7mm Cortical Screws, Self-Tapping, (Star Head), Length 14mm, Titanium	4
	<b>TI-1242.16</b>	2.7mm Cortical Screws, Self-Tapping, (Star Head), Length 16mm, Titanium	4
	<b>TI-1242.18</b>	2.7mm Cortical Screws, Self-Tapping, (Star Head), Length 18mm, Titanium	4
	<b>TI-1242.20</b>	2.7mm Cortical Screws, Self-Tapping, (Star Head), Length 20mm, Titanium	4
	<b>TI-1242.22</b>	2.7mm Cortical Screws, Self-Tapping, (Star Head), Length 22mm, Titanium	1
	<b>TI-1242.24</b>	2.7mm Cortical Screws, Self-Tapping, (Star Head), Length 24mm, Titanium	1
	<b>TI-1242.26</b>	2.7mm Cortical Screws, Self-Tapping, (Star Head), Length 26mm, Titanium	1
	<b>TI-1242.28</b>	2.7mm Cortical Screws, Self-Tapping, (Star Head), Length 28mm, Titanium	1
	<b>TI-1242.30</b>	2.7mm Cortical Screws, Self-Tapping, (Star Head), Length 30mm, Titanium	1
	<b>TI-1242.32</b>	2.7mm Cortical Screws, Self-Tapping, (Star Head), Length 32mm, Titanium	4
	<b>TI-1242.34</b>	2.7mm Cortical Screws, Self-Tapping, (Star Head), Length 34mm, Titanium	4
	<b>TI-1242.36</b>	2.7mm Cortical Screws, Self-Tapping, (Star Head), Length 36mm, Titanium	4
	<b>TI-1242.38</b>	2.7mm Cortical Screws, Self-Tapping, (Star Head), Length 38mm, Titanium	4
	<b>TI-1242.40</b>	2.7mm Cortical Screws, Self-Tapping, (Star Head), Length 40mm, Titanium	4
Screws	<b>TI-1241.06</b>	2.7mm Wise-Lock Screws, Self-Tapping, (Star Head), Length 6mm, Titanium	4
	<b>TI-1241.07</b>	2.7mm Wise-Lock Screws, Self-Tapping, (Star Head), Length 7mm, Titanium	4
	<b>TI-1241.08</b>	2.7mm Wise-Lock Screws, Self-Tapping, (Star Head), Length 8mm, Titanium	4
	<b>TI-1241.09</b>	2.7mm Wise-Lock Screws, Self-Tapping, (Star Head), Length 9mm, Titanium	4
	<b>TI-1241.10</b>	2.7mm Wise-Lock Screws, Self-Tapping, (Star Head), Length 10mm, Titanium	4
	<b>TI-1241.12</b>	2.7mm Wise-Lock Screws, Self-Tapping, (Star Head), Length 12mm, Titanium	4
	<b>TI-1241.14</b>	2.7mm Wise-Lock Screws, Self-Tapping, (Star Head), Length 14mm, Titanium	4
	<b>TI-1241.16</b>	2.7mm Wise-Lock Screws, Self-Tapping, (Star Head), Length 16mm, Titanium	4
	<b>TI-1241.18</b>	2.7mm Wise-Lock Screws, Self-Tapping, (Star Head), Length 18mm, Titanium	4
	<b>TI-1241.20</b>	2.7mm Wise-Lock Screws, Self-Tapping, (Star Head), Length 20mm, Titanium	4
	<b>TI-1241.22</b>	2.7mm Wise-Lock Screws, Self-Tapping, (Star Head), Length 22mm, Titanium	2
	<b>TI-1241.24</b>	2.7mm Wise-Lock Screws, Self-Tapping, (Star Head), Length 24mm, Titanium	2
	<b>TI-1241.26</b>	2.7mm Wise-Lock Screws, Self-Tapping, (Star Head), Length 26mm, Titanium	2
<b>TI-1241.28</b>	2.7mm Wise-Lock Screws, Self-Tapping, (Star Head), Length 28mm, Titanium	2	
<b>TI-1241.30</b>	2.7mm Wise-Lock Screws, Self-Tapping, (Star Head), Length 30mm, Titanium	2	



**USA**

Auxein Inc.  
1500 Nw 89th Court, Suite 107-108  
Doral, Florida 33172  
Tel: +1 305 395 6062  
E Fax: +1 305 395 6262  
Email: USoffice@auxein.com

**MEXICO**

Auxein México, S.A. de C.V.  
Tepic 139 int 801, Colonia Roma Sur,  
Alcaldía Cuauhtémoc, CDMX,  
México, C.P. 06760  
Tel: +521 55 7261 0318  
Email: info@auxein.mx

**INDIA**

Auxein Medical Pvt. Ltd.  
Plot No. 168-169-170, Phase-4,  
Kundli Industrial Area,  
HSIIDC, Sector-57, Sonapat - 131028, Haryana  
Tel: +91 99106 43638 | Fax: +91 86077 70197  
Email: info@auxein.com